

FULL BAND TUNING NOTES

Play this sequence of notes with a tuner set to 440.

If your instrument is SHARP, it is too SHORT. Pull out the specific tuning portion.

If your instrument is FLAT, it is too LONG. Push in the specific tuning portion.

Flute

Adjust headjoint in/out



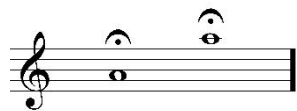
Trumpet

Adjust tuning slide in/out



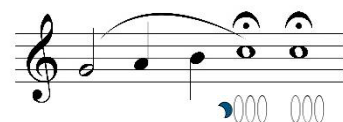
Oboe

Adjust reed



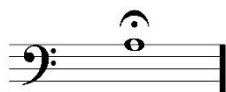
French Horn

Adjust tuning slide in/out (first fermata B^b side, second fermata F side)



Bassoon

Adjust reed



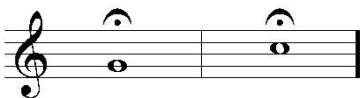
Trombone

Adjust tuning slide in/out



Clarinet

Adjust barrel (G) and space between upper/lower join (C)



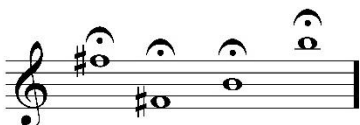
Euphonium

Adjust tuning slide in/out



Saxophone

Adjust mouthpiece in/out



Tuba

Adjust tuning slide in/out

