

Scale Worksheet | How To

Heterogenous class suggestion: If multiple transposed instruments are in the same classroom, it is recommended that all students participate in the same scale name, rather than transposing the concert pitch scales. This will allow all students to actively work on the same letter names when saying the note names out loud. When it is time to play the lines, all students can play at once (for a 1-2-4-5 cluster sound), or the class can be broken into transposing groups (ex: all clarinet, trumpets, and saxophones play while everyone else says/fingers)

Step 1: Have students WRITE down the letter names for the scale in the 1-8-1 blanks. They can reference the written notation in line one and match up the measure numbers to the blank numbers.

- *While writing in letter names above music is generally not permissible, the act of writing out the letter names on this worksheet is an elementary reinforcement of learning the correct notes.*

Step 2: Have students TOUCH the letter names they just wrote in and SAY the note names out loud.

- *Saying the note names out loud will help train the students to say the letter names in their head later when playing their instrument.*

Step 3: Have students look at line 1 and SAY the note names while FINGERING the correct notes on their instrument.

- *The teacher or an advanced student can play the scale while the students say/finger to provide a model tone and pitch source. Many students will start saying the note names on pitch when a pitch reference is provided.*

Step 4: Have students PLAY line 1.

- *Students can also play the line in reverse to go back down the scale*

Step 5: Have students look at line 2 and SAY the note names while FINGERING the correct notes on their instrument.

Step 6: Have students PLAY line 2.

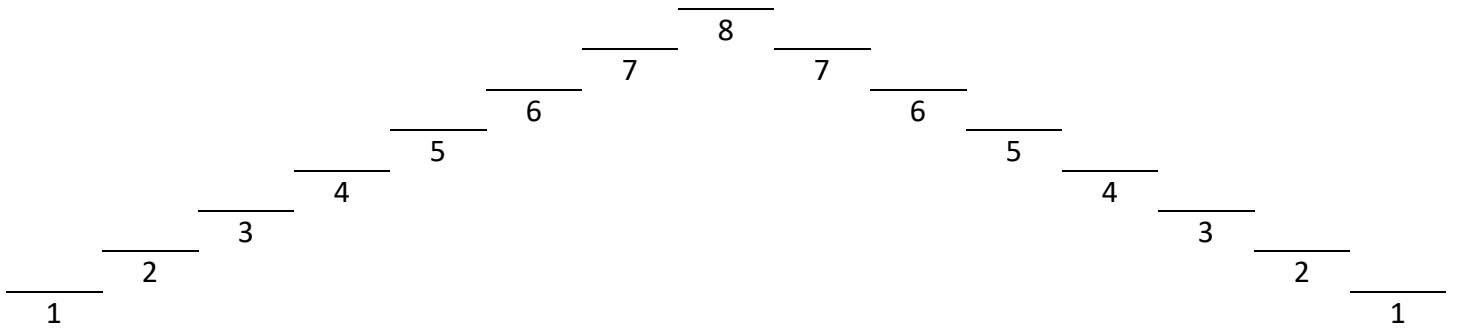
Step 7: Have students look at line 3 and SAY the note names while FINGERING the correct notes on their instrument.

Step 8: Have students PLAY line 3.

- *If some students would benefit from saying and fingering through the line again, one portion of the class can play while the rest of the class says/fingers again.*

Step 9: Continue the same pattern with the remaining lines.

A^b Scale



Whole Note Scale

1. *Whole Note Scale*

A musical staff in bass clef with a 4/4 time signature. It contains eight whole notes: A-flat, B-flat, C, D-flat, E-flat, F, G, and A-flat. Fingerings 1 through 8 are written above each note.

Half Note Scale

2. *Half Note Scale*

A musical staff in bass clef with a 4/4 time signature. It contains sixteen half notes: A-flat, B-flat, C, D-flat, E-flat, F, G, A-flat, B-flat, C, D-flat, E-flat, F, G, and A-flat.

Standard Scale Pattern

3. *Standard Scale Pattern*

A musical staff in bass clef with a 4/4 time signature. It contains sixteen eighth notes: A-flat, B-flat, C, D-flat, E-flat, F, G, A-flat, B-flat, C, D-flat, E-flat, F, G, and A-flat. A blue circle highlights the first four notes (A-flat, B-flat, C, D-flat). A slur covers the last eight notes (A-flat, B-flat, C, D-flat, E-flat, F, G, A-flat).

Inverse Scale Pattern

4. *Inverse Scale Pattern*

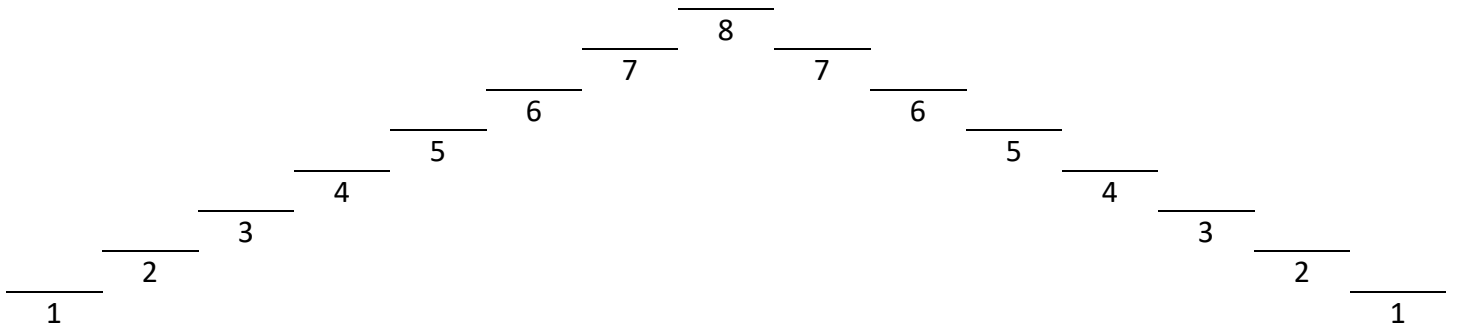
A musical staff in bass clef with a 4/4 time signature. It contains sixteen eighth notes: A-flat, B-flat, C, D-flat, E-flat, F, G, A-flat, B-flat, C, D-flat, E-flat, F, G, and A-flat. The notes are arranged in an inverse pattern.

Eighth Note Scale Pattern

5. *Eighth Note Scale Pattern*

A musical staff in bass clef with a 4/4 time signature. It contains sixteen eighth notes: A-flat, B-flat, C, D-flat, E-flat, F, G, A-flat, B-flat, C, D-flat, E-flat, F, G, and A-flat. A slur covers the last eight notes (A-flat, B-flat, C, D-flat, E-flat, F, G, A-flat).

A^b Scale



Whole Note Scale

1. Musical notation for the whole note A-flat scale. The key signature has two flats (B-flat and E-flat). The scale is written in a single staff with a bass clef and a 4/4 time signature. The notes are: A-flat, B-flat, C, D, E-flat, F, G, A-flat. Each note is a whole note, and the sequence is numbered 1 through 8.

Half Note Scale

2. Musical notation for the half note A-flat scale. The key signature has two flats. The scale is written in a single staff with a bass clef and a 4/4 time signature. The notes are: A-flat, B-flat, C, D, E-flat, F, G, A-flat. Each note is a half note, and the sequence is numbered 1 through 8.

Standard Scale Pattern

3. Musical notation for the standard scale pattern of the A-flat scale. The key signature has two flats. The scale is written in a single staff with a bass clef and a 4/4 time signature. The notes are: A-flat, B-flat, C, D, E-flat, F, G, A-flat. The first two notes (A-flat and B-flat) are circled in blue. A slur covers the notes from C to A-flat.

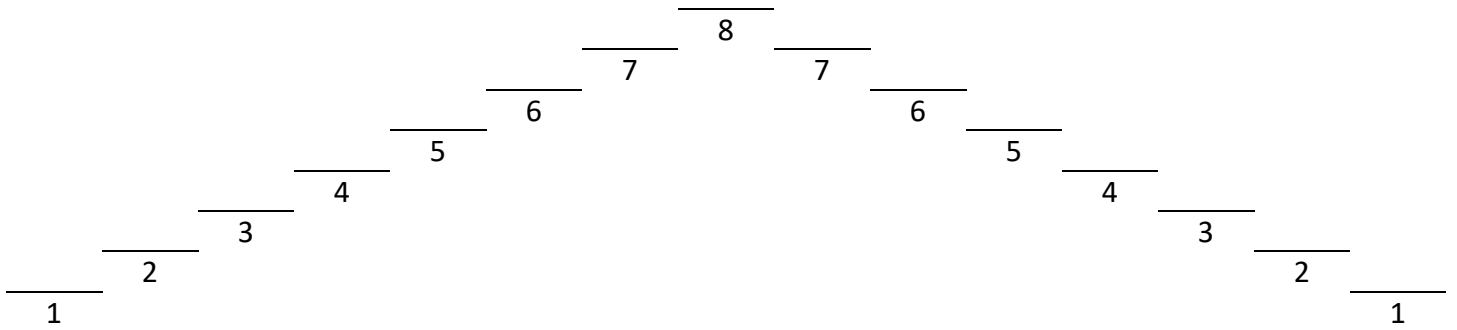
Inverse Scale Pattern

4. Musical notation for the inverse scale pattern of the A-flat scale. The key signature has two flats. The scale is written in a single staff with a bass clef and a 4/4 time signature. The notes are: A-flat, B-flat, C, D, E-flat, F, G, A-flat. A slur covers the notes from A-flat to C.

Eighth Note Scale Pattern

5. Musical notation for the eighth note scale pattern of the A-flat scale. The key signature has two flats. The scale is written in a single staff with a bass clef and a 4/4 time signature. The notes are: A-flat, B-flat, C, D, E-flat, F, G, A-flat. A slur covers the notes from C to A-flat.

A^b Scale



Whole Note Scale

1.
Musical notation for the whole note scale in A-flat major. The key signature has two flats (B-flat and E-flat). The scale is written in 4/4 time with whole notes. The notes are: A-flat, B-flat, C, D, E-flat, F, G, A-flat. The notes are numbered 1 through 8 above the staff.

Half Note Scale

2.
Musical notation for the half note scale in A-flat major. The key signature has two flats (B-flat and E-flat). The scale is written in 4/4 time with half notes. The notes are: A-flat, B-flat, C, D, E-flat, F, G, A-flat.

Standard Scale Pattern

3.
Musical notation for the standard scale pattern in A-flat major. The key signature has two flats (B-flat and E-flat). The scale is written in 4/4 time with quarter notes. The notes are: A-flat, B-flat, C, D, E-flat, F, G, A-flat. A blue circle highlights the first four notes (A-flat, B-flat, C, D). A slur covers the last four notes (E-flat, F, G, A-flat).

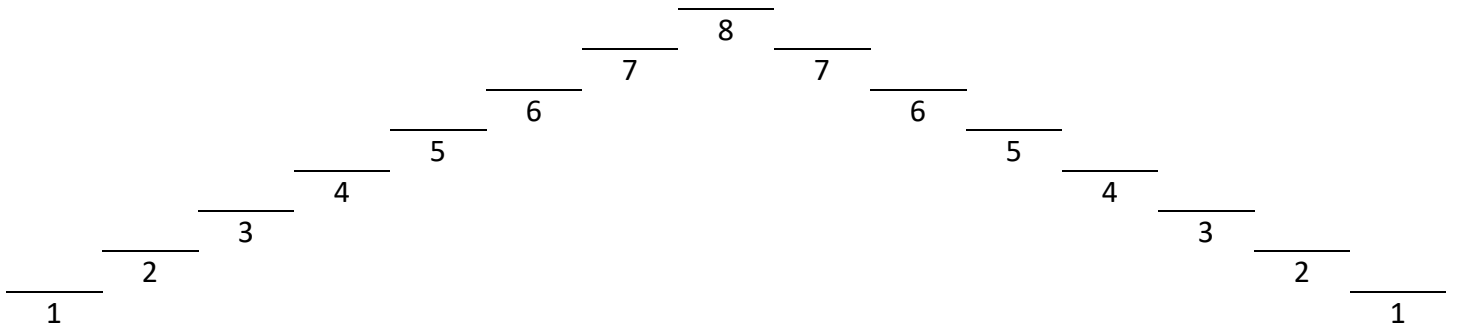
Inverse Scale Pattern

4.
Musical notation for the inverse scale pattern in A-flat major. The key signature has two flats (B-flat and E-flat). The scale is written in 4/4 time with quarter notes. The notes are: A-flat, B-flat, C, D, E-flat, F, G, A-flat.

Eighth Note Scale Pattern

5.
Musical notation for the eighth note scale pattern in A-flat major. The key signature has two flats (B-flat and E-flat). The scale is written in 4/4 time with eighth notes. The notes are: A-flat, B-flat, C, D, E-flat, F, G, A-flat. A slur covers the last four notes (E-flat, F, G, A-flat).

A^b Scale



Whole Note Scale

1.

Musical notation for the whole note scale of A-flat. The key signature has two flats (B^b and E^b). The scale is written in 4/4 time, with each note held for a whole note. The notes are: A^b, B^b, C^b, D^b, E^b, F^b, G^b, A^b. Fingerings 1 through 8 are indicated above the notes.

Half Note Scale

2.

Musical notation for the half note scale of A-flat. The key signature has two flats (B^b and E^b). The scale is written in 4/4 time, with each note held for a half note. The notes are: A^b, B^b, C^b, D^b, E^b, F^b, G^b, A^b, G^b, F^b, E^b, D^b, C^b, B^b, A^b.

Standard Scale Pattern

3.

Musical notation for the standard scale pattern of A-flat. The key signature has two flats (B^b and E^b). The scale is written in 4/4 time, with each note held for a quarter note. The notes are: A^b, B^b, C^b, D^b, E^b, F^b, G^b, A^b, G^b, F^b, E^b, D^b, C^b, B^b, A^b. A slur is placed over the ascending half of the scale.

Inverse Scale Pattern

4.

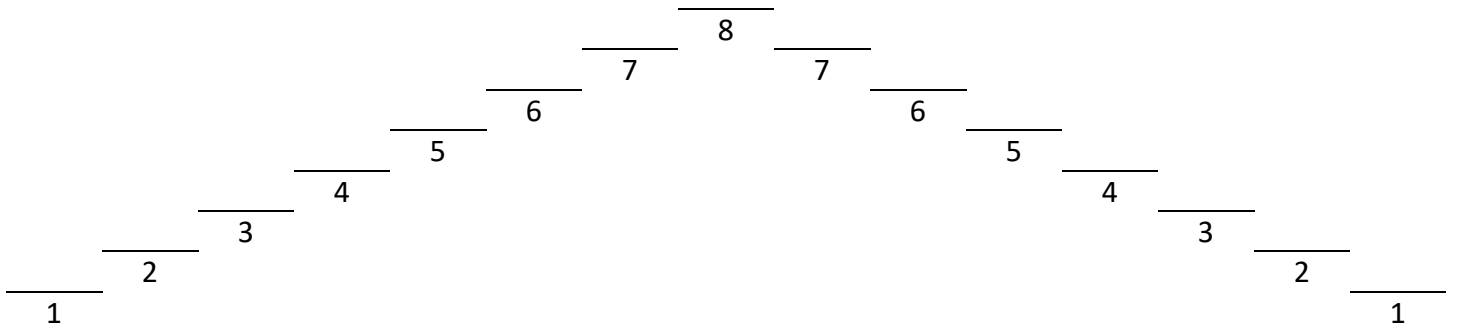
Musical notation for the inverse scale pattern of A-flat. The key signature has two flats (B^b and E^b). The scale is written in 4/4 time, with each note held for a quarter note. The notes are: A^b, B^b, C^b, D^b, E^b, F^b, G^b, A^b, G^b, F^b, E^b, D^b, C^b, B^b, A^b. A slur is placed over the descending half of the scale.

Eighth Note Scale Pattern

5.

Musical notation for the eighth note scale pattern of A-flat. The key signature has two flats (B^b and E^b). The scale is written in 4/4 time, with each note held for an eighth note. The notes are: A^b, B^b, C^b, D^b, E^b, F^b, G^b, A^b, G^b, F^b, E^b, D^b, C^b, B^b, A^b. A slur is placed over the ascending half of the scale.

A^b Scale



1. **Whole Note Scale**

Musical notation for the whole note scale in A-flat major. The key signature has two flats (B-flat and E-flat). The scale is written in treble clef with a 4/4 time signature. The notes are: A-flat (1), B-flat (2), C (3), D (4), E-flat (5), F (6), G (7), and A-flat (8). Each note is a whole note.

2. **Half Note Scale**

Musical notation for the half note scale in A-flat major. The key signature has two flats. The scale is written in treble clef. The notes are: A-flat, B-flat, C, D, E-flat, F, G, A-flat, B-flat, C, D, E-flat, F, G, A-flat. Each note is a half note.

3. **Standard Scale Pattern**

Musical notation for the standard scale pattern in A-flat major. The key signature has two flats. The scale is written in treble clef. The notes are: A-flat, B-flat, C, D, E-flat, F, G, A-flat, B-flat, C, D, E-flat, F, G, A-flat. The first two notes (A-flat and B-flat) are circled in blue. A slur covers the notes from G to A-flat.

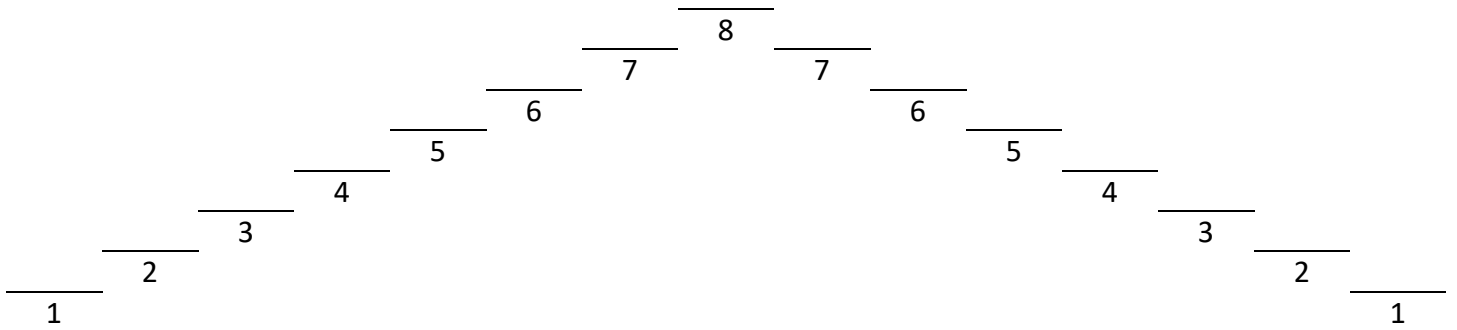
4. **Inverse Scale Pattern**

Musical notation for the inverse scale pattern in A-flat major. The key signature has two flats. The scale is written in treble clef. The notes are: A-flat, B-flat, C, D, E-flat, F, G, A-flat, B-flat, C, D, E-flat, F, G, A-flat. A slur covers the notes from G to A-flat.

5. **Eighth Note Scale Pattern**

Musical notation for the eighth note scale pattern in A-flat major. The key signature has two flats. The scale is written in treble clef. The notes are: A-flat, B-flat, C, D, E-flat, F, G, A-flat, B-flat, C, D, E-flat, F, G, A-flat. A slur covers the notes from G to A-flat.

A Scale



Whole Note Scale

1. *Whole Note Scale*

A musical staff in bass clef with a 4/4 time signature. It contains eight whole notes: A2, B2, C#3, D3, E3, F#3, G#3, and A3. The notes are labeled with numbers 1 through 8 above them.

Half Note Scale

2. *Half Note Scale*

A musical staff in bass clef with a 4/4 time signature. It contains sixteen half notes: A2, B2, C#3, D3, E3, F#3, G#3, A3, G#3, F#3, E3, D3, C#3, B2, A2. The notes are labeled with numbers 1 through 8 above them.

Standard Scale Pattern

3. *Standard Scale Pattern*

A musical staff in bass clef with a key signature of two sharps (F# and C#). It contains sixteen eighth notes: A2, B2, C#3, D3, E3, F#3, G#3, A3, G#3, F#3, E3, D3, C#3, B2, A2. The first three notes (F#, C#, G#) are circled in blue. A slur covers the last seven notes.

Inverse Scale Pattern

4. *Inverse Scale Pattern*

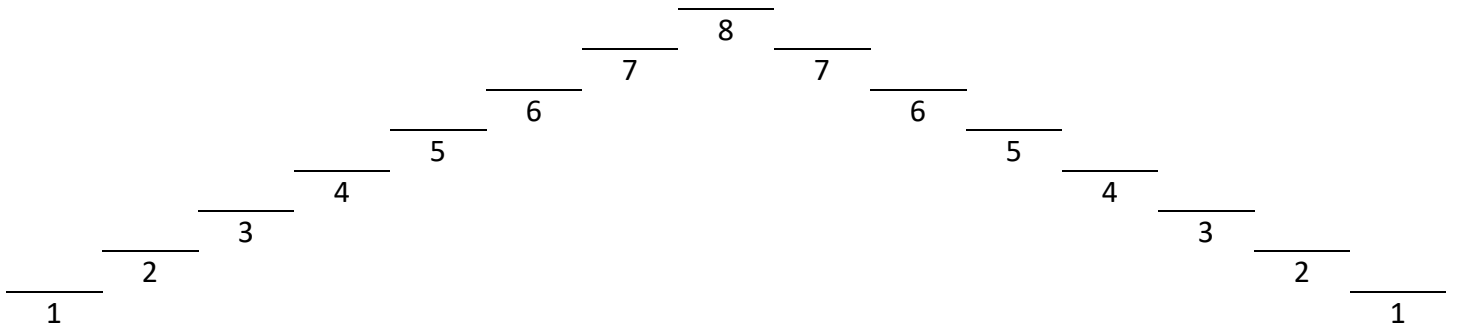
A musical staff in bass clef with a key signature of two sharps (F# and C#). It contains sixteen eighth notes: A3, G#3, F#3, E3, D3, C#3, B2, A2, B2, C#3, D3, E3, F#3, G#3, A3. The first three notes (F#, C#, G#) are circled in blue.

Eighth Note Scale Pattern

5. *Eighth Note Scale Pattern*

A musical staff in bass clef with a key signature of two sharps (F# and C#). It contains sixteen eighth notes: A2, B2, C#3, D3, E3, F#3, G#3, A3, G#3, F#3, E3, D3, C#3, B2, A2. The first three notes (F#, C#, G#) are circled in blue. A slur covers the last seven notes.

A Scale



Whole Note Scale

1.

Half Note Scale

2.

Standard Scale Pattern

3.

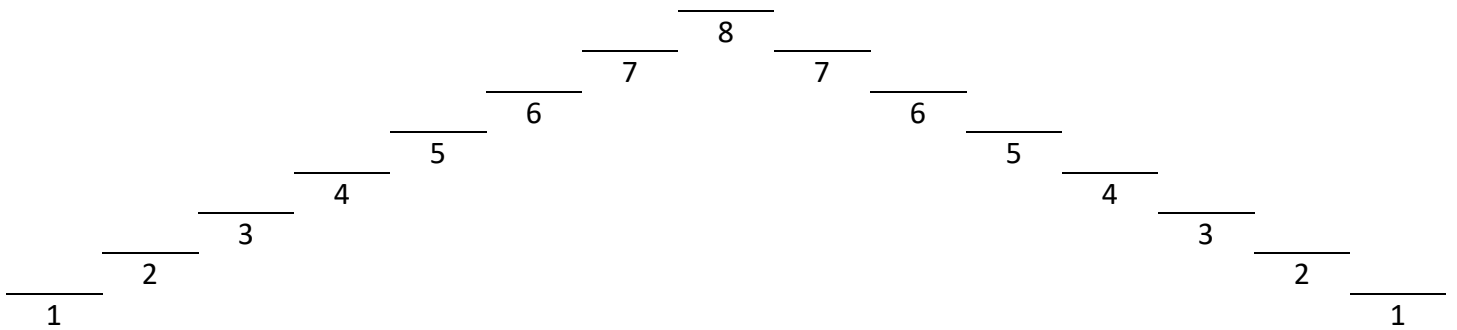
Inverse Scale Pattern

4.

Eighth Note Scale Pattern

5.

A Scale



Whole Note Scale

1. Musical notation for the whole note scale in A major. The staff is in treble clef with a 4/4 time signature. The notes are A, B, C, D, E, F#, G, A, each held for a whole note. Fingerings 1 through 8 are written above the notes.

Half Note Scale

2. Musical notation for the half note scale in A major. The staff is in treble clef. The notes are A, B, C, D, E, F#, G, A, each held for a half note.

Standard Scale Pattern

3. Musical notation for the standard scale pattern in A major. The staff is in treble clef. The notes are A, B, C, D, E, F#, G, A, each held for a quarter note. A blue circle highlights the first three notes (A, B, C) and a blue bracket spans the last three notes (F#, G, A).

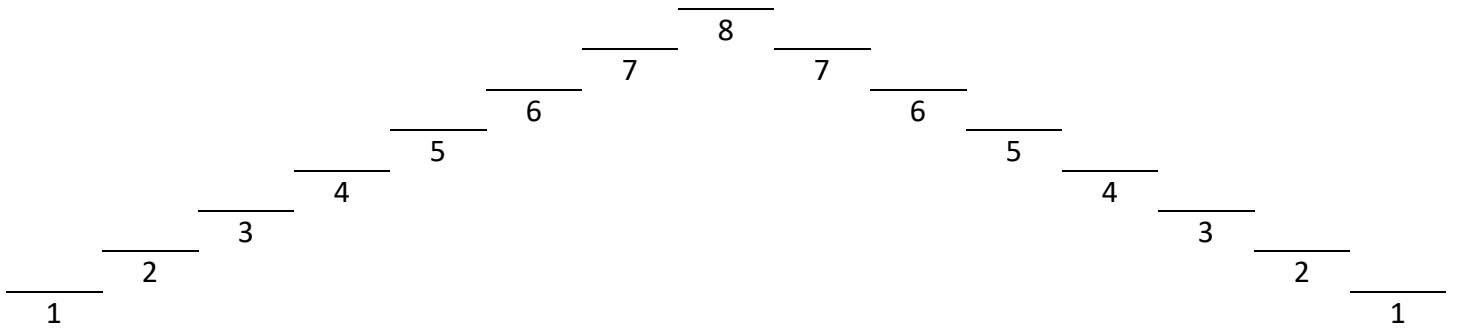
Inverse Scale Pattern

4. Musical notation for the inverse scale pattern in A major. The staff is in treble clef. The notes are A, B, C, D, E, F#, G, A, each held for a quarter note. The notes are arranged in a descending order from A to A.

Eighth Note Scale Pattern

5. Musical notation for the eighth note scale pattern in A major. The staff is in treble clef. The notes are A, B, C, D, E, F#, G, A, each held for an eighth note. A blue circle highlights the first three notes (A, B, C) and a blue bracket spans the last three notes (F#, G, A).

A Scale



Whole Note Scale

1. Musical notation for a whole note A major scale. The key signature has three sharps (F#, C#, G#). The scale is written in a 4/4 time signature with whole notes. The notes are A, B, C, D, E, F#, G, A, with fingerings 1 through 8 indicated above each note.

Half Note Scale

2. Musical notation for a half note A major scale. The key signature has three sharps (F#, C#, G#). The scale is written in a 4/4 time signature with half notes. The notes are A, B, C, D, E, F#, G, A, with fingerings 1 through 8 indicated above each note.

Standard Scale Pattern

3. Musical notation for a standard eighth note A major scale pattern. The key signature has three sharps (F#, C#, G#). The scale is written in a 4/4 time signature with eighth notes. The notes are A, B, C, D, E, F#, G, A, with fingerings 1 through 8 indicated above each note. A blue circle highlights the first three notes (A, B, C) and their sharps. A slur covers the entire scale.

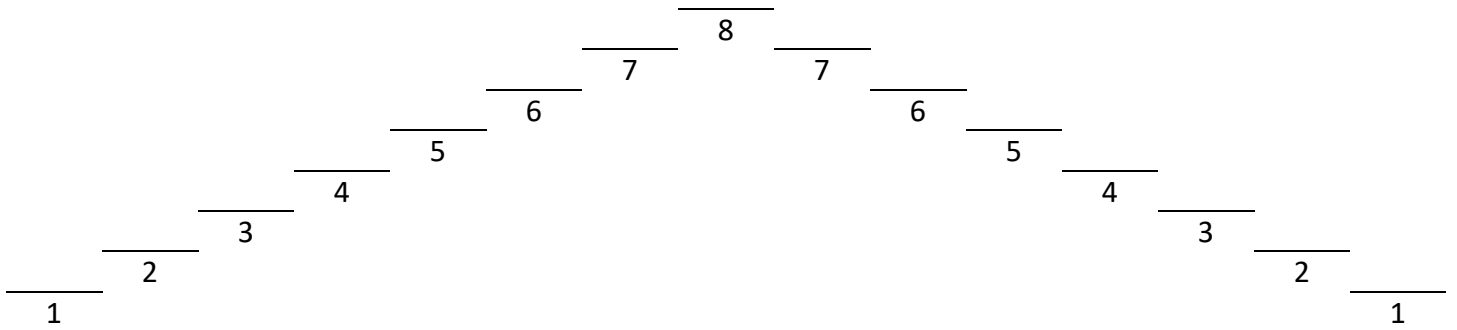
Inverse Scale Pattern

4. Musical notation for an inverse eighth note A major scale pattern. The key signature has three sharps (F#, C#, G#). The scale is written in a 4/4 time signature with eighth notes. The notes are A, G, F#, E, D, C, B, A, with fingerings 8, 7, 6, 5, 4, 3, 2, 1 indicated above each note. A slur covers the entire scale.

Eighth Note Scale Pattern

5. Musical notation for an eighth note A major scale pattern. The key signature has three sharps (F#, C#, G#). The scale is written in a 4/4 time signature with eighth notes. The notes are A, B, C, D, E, F#, G, A, with fingerings 1 through 8 indicated above each note. A slur covers the entire scale.

A Scale



Whole Note Scale

1. A musical staff in 4/4 time showing a whole note scale. The notes are: C4 (finger 1), D4 (finger 2), E4 (finger 3), F#4 (finger 4), G4 (finger 5), A4 (finger 6), B4 (finger 7), and C5 (finger 8). The key signature has three sharps (F#, C#, G#).

Half Note Scale

2. A musical staff in 4/4 time showing a half note scale. The notes are: C4 (finger 1), D4 (finger 2), E4 (finger 3), F#4 (finger 4), G4 (finger 5), A4 (finger 6), B4 (finger 7), and C5 (finger 8). The key signature has three sharps (F#, C#, G#).

Standard Scale Pattern

3. A musical staff in 4/4 time showing a standard scale pattern. The notes are: C4 (finger 1), D4 (finger 2), E4 (finger 3), F#4 (finger 4), G4 (finger 5), A4 (finger 6), B4 (finger 7), C5 (finger 8), B4 (finger 7), A4 (finger 6), G4 (finger 5), F#4 (finger 4), E4 (finger 3), D4 (finger 2), and C4 (finger 1). A slur covers the notes from G4 to C5.

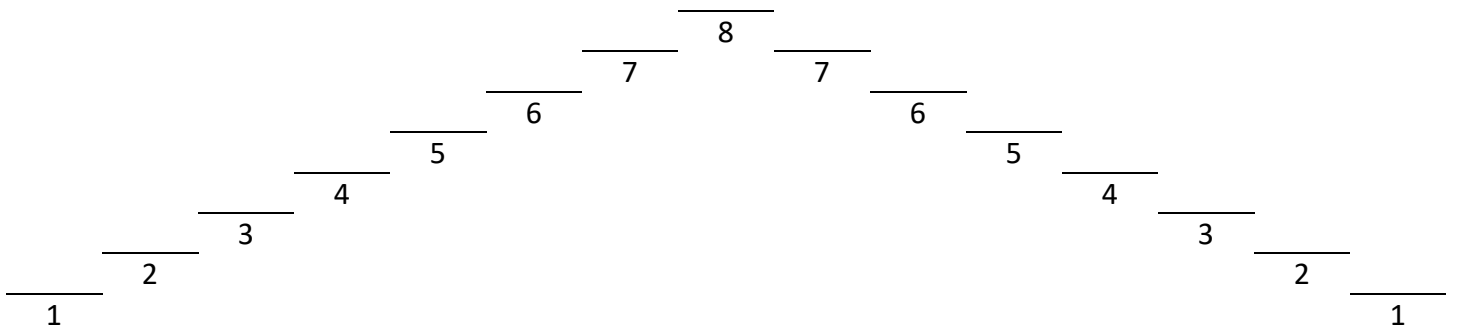
Inverse Scale Pattern

4. A musical staff in 4/4 time showing an inverse scale pattern. The notes are: C5 (finger 8), B4 (finger 7), A4 (finger 6), G4 (finger 5), F#4 (finger 4), E4 (finger 3), D4 (finger 2), C4 (finger 1), B4 (finger 7), A4 (finger 6), G4 (finger 5), F#4 (finger 4), E4 (finger 3), D4 (finger 2), and C4 (finger 1). A slur covers the notes from C5 to C4.

Eighth Note Scale Pattern

5. A musical staff in 4/4 time showing an eighth note scale pattern. The notes are: C4 (finger 1), D4 (finger 2), E4 (finger 3), F#4 (finger 4), G4 (finger 5), A4 (finger 6), B4 (finger 7), C5 (finger 8), B4 (finger 7), A4 (finger 6), G4 (finger 5), F#4 (finger 4), E4 (finger 3), D4 (finger 2), and C4 (finger 1). A slur covers the notes from G4 to C5.

B^b Scale



Whole Note Scale

1.
Musical notation for the whole note scale in B^b. The staff is in bass clef with a 4/4 time signature. The notes are: B^b (whole), C (whole), D (whole), E^b (whole), F (whole), G (whole), A (whole), B^b (whole). Fingerings 1 through 8 are indicated above the notes.

Half Note Scale

2.
Musical notation for the half note scale in B^b. The staff is in bass clef. The notes are: B^b, C, D, E^b, F, G, A, B^b, C, D, E^b, F, G, A, B^b. Fingerings 1 through 8 are indicated above the notes.

Standard Scale Pattern

3.
Musical notation for the standard scale pattern in B^b. The staff is in bass clef. The notes are: B^b, C, D, E^b, F, G, A, B^b, C, D, E^b, F, G, A, B^b. A blue circle highlights the B^b and C notes. A slur covers the notes from E^b to B^b.

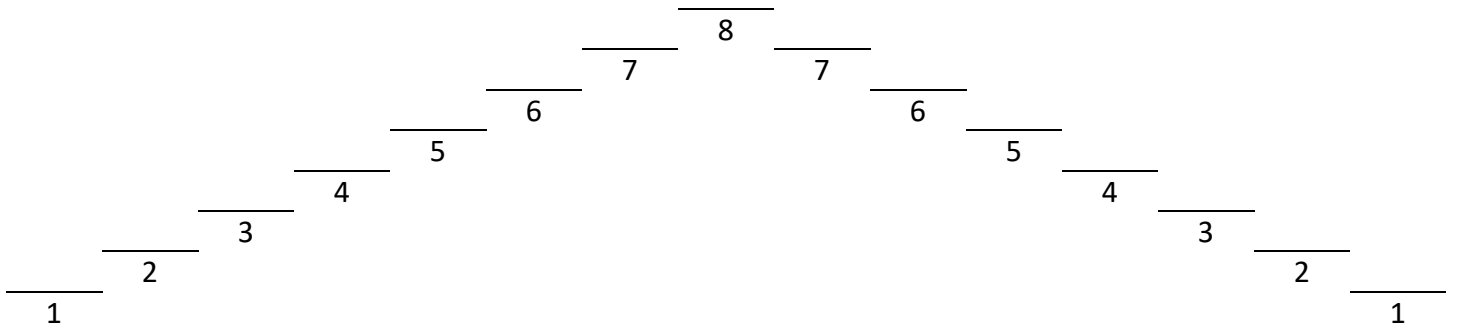
Inverse Scale Pattern

4.
Musical notation for the inverse scale pattern in B^b. The staff is in bass clef. The notes are: B^b, A, G, F, E^b, D, C, B^b, A, G, F, E^b, D, C, B^b. Fingerings 1 through 8 are indicated above the notes.

Eighth Note Scale Pattern

5.
Musical notation for the eighth note scale pattern in B^b. The staff is in bass clef. The notes are: B^b, C, D, E^b, F, G, A, B^b, C, D, E^b, F, G, A, B^b. A slur covers the notes from E^b to B^b.

B^b Scale



Whole Note Scale

1. Musical notation for the whole note B^b scale. The key signature has two flats (B^b and E^b). The scale is written in a single line of music with whole notes. The notes are: B^b, C, D, E^b, F, G, A, B^b. Fingering numbers 1 through 8 are placed above each note.

Half Note Scale

2. Musical notation for the half note B^b scale. The key signature has two flats. The scale is written in a single line of music with half notes. The notes are: B^b, C, D, E^b, F, G, A, B^b. Fingering numbers 1 through 8 are placed above each note.

Standard Scale Pattern

3. Musical notation for the standard scale pattern of the B^b scale. The key signature has two flats. The scale is written in a single line of music with quarter notes. The notes are: B^b, C, D, E^b, F, G, A, B^b. A blue circle highlights the first two notes (B^b and C). A slur covers the notes from D to B^b.

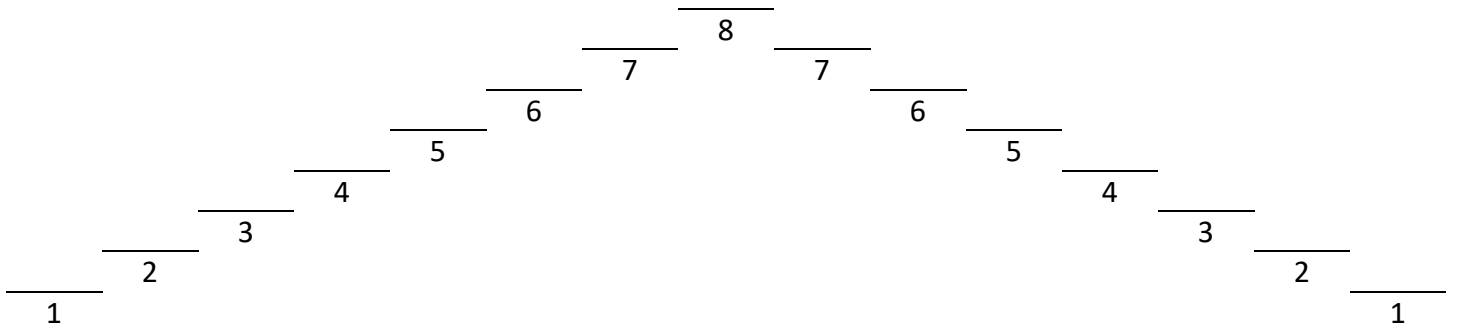
Inverse Scale Pattern

4. Musical notation for the inverse scale pattern of the B^b scale. The key signature has two flats. The scale is written in a single line of music with quarter notes. The notes are: B^b, A, G, F, E^b, D, C, B^b. A slur covers the notes from B^b to C.

Eighth Note Scale Pattern

5. Musical notation for the eighth note scale pattern of the B^b scale. The key signature has two flats. The scale is written in a single line of music with eighth notes. The notes are: B^b, C, D, E^b, F, G, A, B^b. A slur covers the notes from D to B^b.

B^b Scale



Whole Note Scale

1. Musical notation for the whole note scale in B^b. The key signature has two flats (B^b and E^b). The scale is written in 4/4 time with whole notes. The notes are: B^b (1), C (2), D (3), E^b (4), F (5), G (6), A (7), B^b (8).

Half Note Scale

2. Musical notation for the half note scale in B^b. The key signature has two flats (B^b and E^b). The scale is written in 4/4 time with half notes. The notes are: B^b, C, D, E^b, F, G, A, B^b.

Standard Scale Pattern

3. Musical notation for the standard scale pattern in B^b. The key signature has two flats (B^b and E^b). The scale is written in 4/4 time with quarter notes. The notes are: B^b, C, D, E^b, F, G, A, B^b. A slur covers the notes from G to B^b.

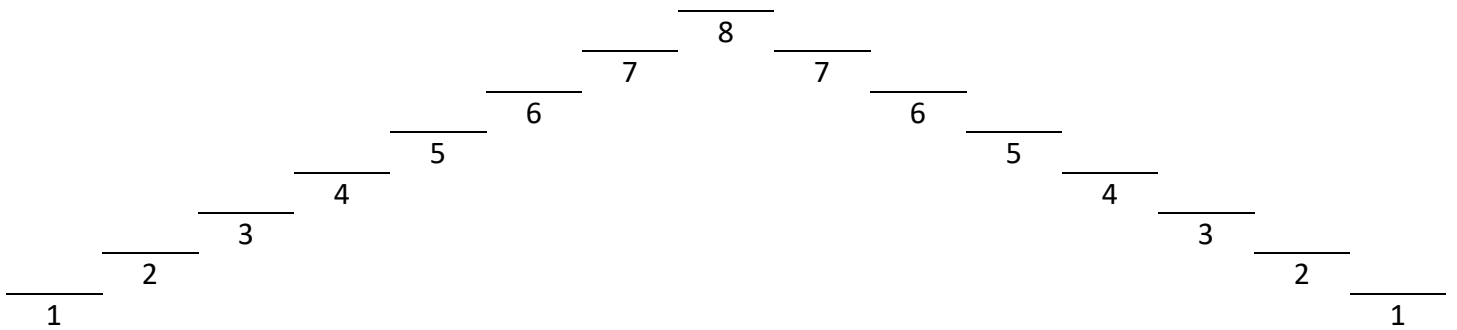
Inverse Scale Pattern

4. Musical notation for the inverse scale pattern in B^b. The key signature has two flats (B^b and E^b). The scale is written in 4/4 time with quarter notes. The notes are: B^b, A, G, F, E^b, D, C, B^b.

Eighth Note Scale Pattern

5. Musical notation for the eighth note scale pattern in B^b. The key signature has two flats (B^b and E^b). The scale is written in 4/4 time with eighth notes. The notes are: B^b, C, D, E^b, F, G, A, B^b. A slur covers the notes from G to B^b.

B^b Scale



Whole Note Scale

1.
Musical notation for the whole note scale in B^b major. The scale is written on a single staff in 4/4 time. The notes are: B^b (1), C (2), D (3), E^b (4), F (5), G (6), A (7), B^b (8). Each note is a whole note.

Half Note Scale

2.
Musical notation for the half note scale in B^b major. The scale is written on a single staff in 4/4 time. The notes are: B^b, C, D, E^b, F, G, A, B^b. Each note is a half note.

Standard Scale Pattern

3.
Musical notation for the standard scale pattern in B^b major. The scale is written on a single staff in 4/4 time. The notes are: B^b, C, D, E^b, F, G, A, B^b. The first two notes (B^b and C) are circled in blue. A slur covers the notes from E^b to B^b.

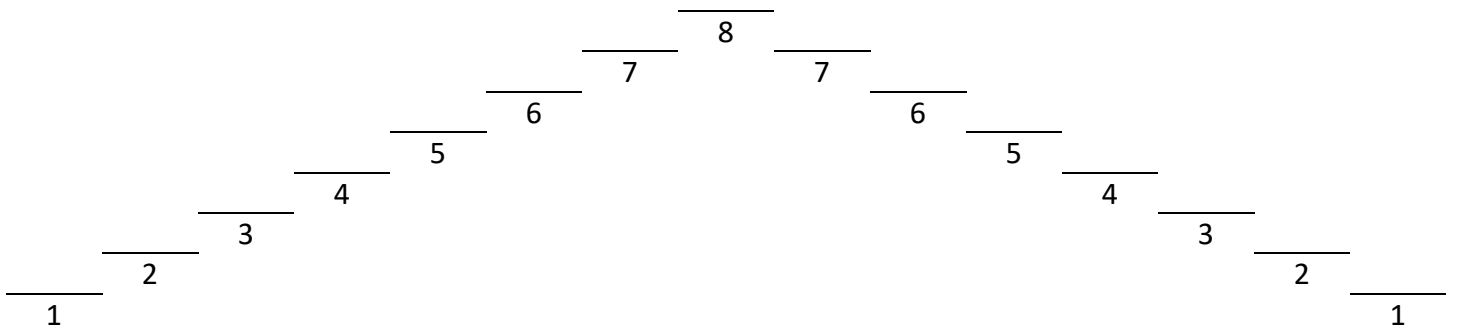
Inverse Scale Pattern

4.
Musical notation for the inverse scale pattern in B^b major. The scale is written on a single staff in 4/4 time. The notes are: B^b, A, G, F, E^b, D, C, B^b. A slur covers the notes from G to B^b.

Eighth Note Scale Pattern

5.
Musical notation for the eighth note scale pattern in B^b major. The scale is written on a single staff in 4/4 time. The notes are: B^b, C, D, E^b, F, G, A, B^b. A slur covers the notes from E^b to B^b.

B^b Scale



1. **Whole Note Scale**

Musical notation for the whole note scale in B^b major. The key signature has two flats (B^b and E^b), and the time signature is 4/4. The notes are: B^b (1), C (2), D (3), E^b (4), F (5), G (6), A (7), B^b (8).

2. **Half Note Scale**

Musical notation for the half note scale in B^b major. The key signature has two flats (B^b and E^b), and the time signature is 4/4. The notes are: B^b, C, D, E^b, F, G, A, B^b, C, D, E^b, F, G, A, B^b.

3. **Standard Scale Pattern**

Musical notation for the standard scale pattern in B^b major. The key signature has two flats (B^b and E^b), and the time signature is 4/4. The notes are: B^b, C, D, E^b, F, G, A, B^b, C, D, E^b, F, G, A, B^b. A slur covers the notes from the second measure to the end of the scale.

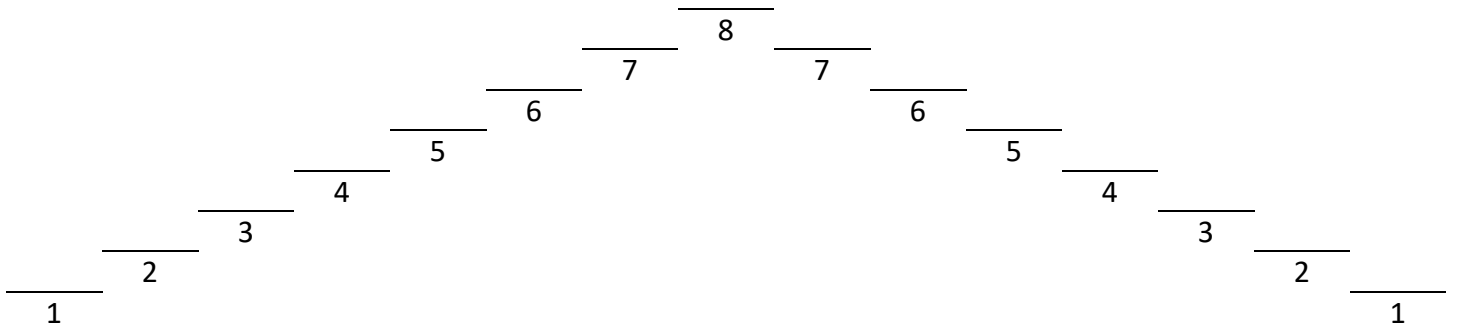
4. **Inverse Scale Pattern**

Musical notation for the inverse scale pattern in B^b major. The key signature has two flats (B^b and E^b), and the time signature is 4/4. The notes are: B^b, A, G, F, E^b, D, C, B^b, A, G, F, E^b, D, C, B^b.

5. **Eighth Note Scale Pattern**

Musical notation for the eighth note scale pattern in B^b major. The key signature has two flats (B^b and E^b), and the time signature is 4/4. The notes are: B^b, C, D, E^b, F, G, A, B^b, C, D, E^b, F, G, A, B^b. A slur covers the notes from the second measure to the end of the scale.

B Scale



Whole Note Scale

1. *Whole Note Scale*

A musical staff in bass clef with a 4/4 time signature. It contains eight whole notes: B1, B2, B3, B4, B5, B6, B7, and B8. The notes are labeled with numbers 1 through 8 above them.

Half Note Scale

2. *Half Note Scale*

A musical staff in bass clef with a 4/4 time signature. It contains sixteen half notes: B1, B2, B3, B4, B5, B6, B7, B8, B7, B6, B5, B4, B3, B2, B1.

Standard Scale Pattern

3. *Standard Scale Pattern*

A musical staff in bass clef with a 4/4 time signature. It contains sixteen eighth notes: B1, B2, B3, B4, B5, B6, B7, B8, B7, B6, B5, B4, B3, B2, B1. A blue circle highlights the first four notes (B1-B4).

Inverse Scale Pattern

4. *Inverse Scale Pattern*

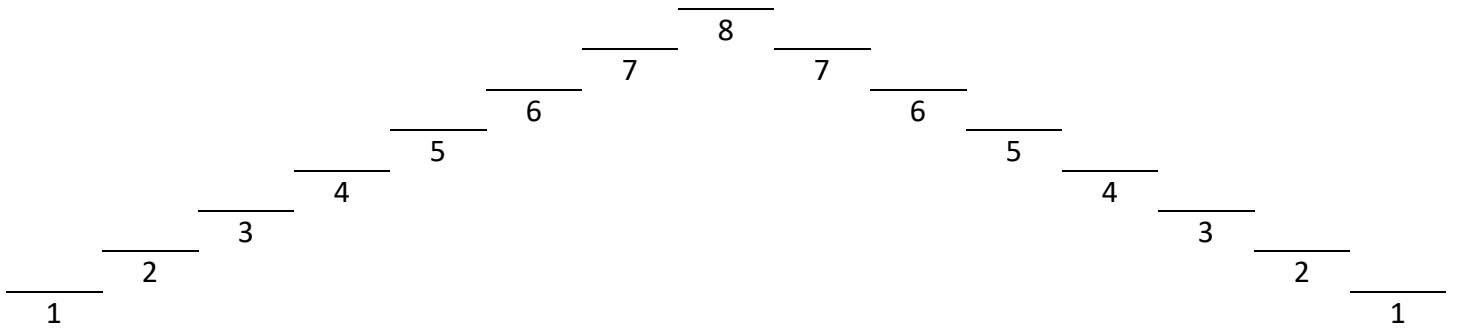
A musical staff in bass clef with a 4/4 time signature. It contains sixteen eighth notes: B1, B2, B3, B4, B5, B6, B7, B8, B7, B6, B5, B4, B3, B2, B1.

Eighth Note Scale Pattern

5. *Eighth Note Scale Pattern*

A musical staff in bass clef with a 4/4 time signature. It contains sixteen eighth notes: B1, B2, B3, B4, B5, B6, B7, B8, B7, B6, B5, B4, B3, B2, B1. The notes are beamed in pairs.

B Scale



Whole Note Scale

1. Musical notation for the B scale in whole notes. The key signature has two sharps (F# and C#). The scale is written on a bass clef staff in 4/4 time. The notes are: B1 (whole), C#2 (whole), C#3 (whole), D4 (whole), D#5 (whole), E#6 (whole), F#7 (whole), G8 (whole). Fingerings 1 through 8 are indicated above each note.

Half Note Scale

2. Musical notation for the B scale in half notes. The key signature has two sharps (F# and C#). The scale is written on a bass clef staff in 4/4 time. The notes are: B1 (half), C#2 (half), C#3 (half), D4 (half), D#5 (half), E#6 (half), F#7 (half), G8 (half). Fingerings 1 through 8 are indicated above each note.

Standard Scale Pattern

3. Musical notation for the B scale in a standard scale pattern. The key signature has two sharps (F# and C#). The scale is written on a bass clef staff in 4/4 time. The notes are: B1 (quarter), C#2 (quarter), C#3 (quarter), D4 (quarter), D#5 (quarter), E#6 (quarter), F#7 (quarter), G8 (quarter), F#7 (quarter), E#6 (quarter), D#5 (quarter), C#3 (quarter), C#2 (quarter), B1 (quarter). A slur covers the notes from D#5 to G8.

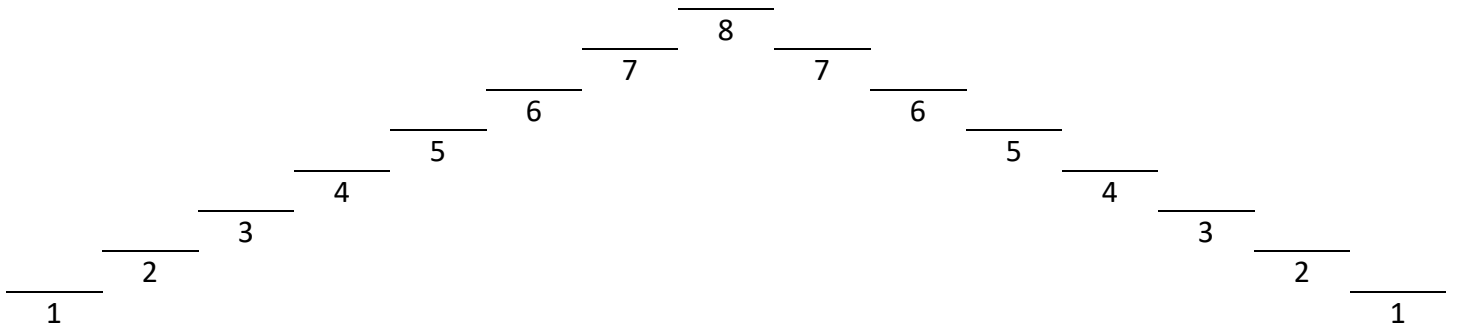
Inverse Scale Pattern

4. Musical notation for the B scale in an inverse scale pattern. The key signature has two sharps (F# and C#). The scale is written on a bass clef staff in 4/4 time. The notes are: G8 (quarter), F#7 (quarter), E#6 (quarter), D#5 (quarter), C#3 (quarter), C#2 (quarter), B1 (quarter), A (quarter), G8 (quarter), F#7 (quarter), E#6 (quarter), D#5 (quarter), C#3 (quarter), C#2 (quarter), B1 (quarter). A slur covers the notes from G8 to B1.

Eighth Note Scale Pattern

5. Musical notation for the B scale in an eighth note scale pattern. The key signature has two sharps (F# and C#). The scale is written on a bass clef staff in 4/4 time. The notes are: B1 (quarter), C#2 (quarter), C#3 (quarter), D4 (quarter), D#5 (quarter), E#6 (quarter), F#7 (quarter), G8 (quarter), F#7 (quarter), E#6 (quarter), D#5 (quarter), C#3 (quarter), C#2 (quarter), B1 (quarter). A slur covers the notes from D#5 to G8.

B Scale



Whole Note Scale

1. Musical notation for the B scale in whole notes. The key signature has three sharps (F#, C#, G#). The notes are B, C, D, E, F, G, A, B, A, G, F, E, D, C, B. Fingerings 1 through 8 are indicated above the notes.

Half Note Scale

2. Musical notation for the B scale in half notes. The key signature has three sharps (F#, C#, G#). The notes are B, C, D, E, F, G, A, B, A, G, F, E, D, C, B.

Standard Scale Pattern

3. Musical notation for the B scale in a standard scale pattern. The key signature has three sharps (F#, C#, G#). The notes are B, C, D, E, F, G, A, B, A, G, F, E, D, C, B. A blue circle highlights the first five notes (B, C, D, E, F), and a slur covers the last five notes (A, G, F, E, D).

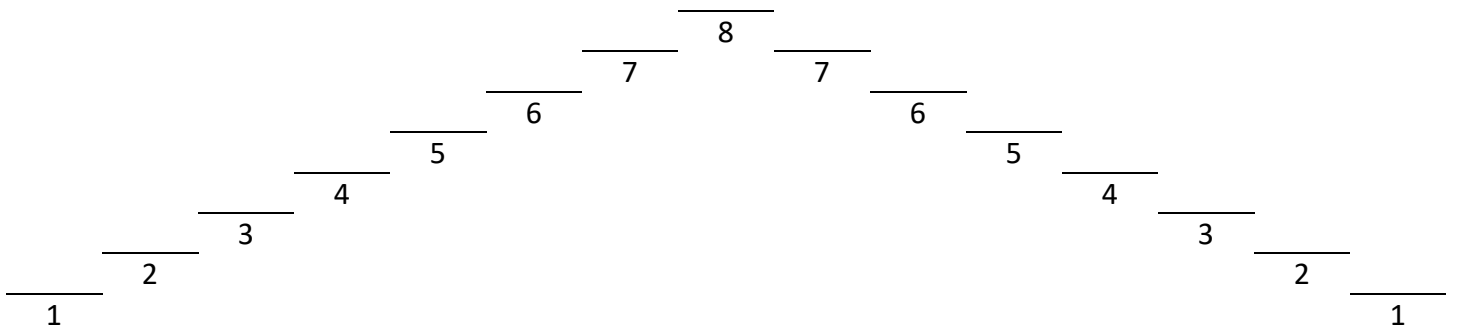
Inverse Scale Pattern

4. Musical notation for the B scale in an inverse scale pattern. The key signature has three sharps (F#, C#, G#). The notes are B, A, G, F, E, D, C, B, C, D, E, F, G, A, B.

Eighth Note Scale Pattern

5. Musical notation for the B scale in an eighth note scale pattern. The key signature has three sharps (F#, C#, G#). The notes are B, C, D, E, F, G, A, B, A, G, F, E, D, C, B. A slur covers the last five notes (A, G, F, E, D).

B Scale



Whole Note Scale

1.
Musical notation for the B scale using whole notes. The key signature has three sharps (F#, C#, G#). The notes are B, C#, D#, E, F#, G#, A, B. Each note is numbered 1 through 8 above it.

Half Note Scale

2.
Musical notation for the B scale using half notes. The key signature has three sharps (F#, C#, G#). The notes are B, C#, D#, E, F#, G#, A, B.

Standard Scale Pattern

3.
Musical notation for the B scale using quarter notes. The key signature has three sharps (F#, C#, G#). The notes are B, C#, D#, E, F#, G#, A, B. A blue circle highlights the first four notes (B, C#, D#, E). A slur covers the last four notes (F#, G#, A, B).

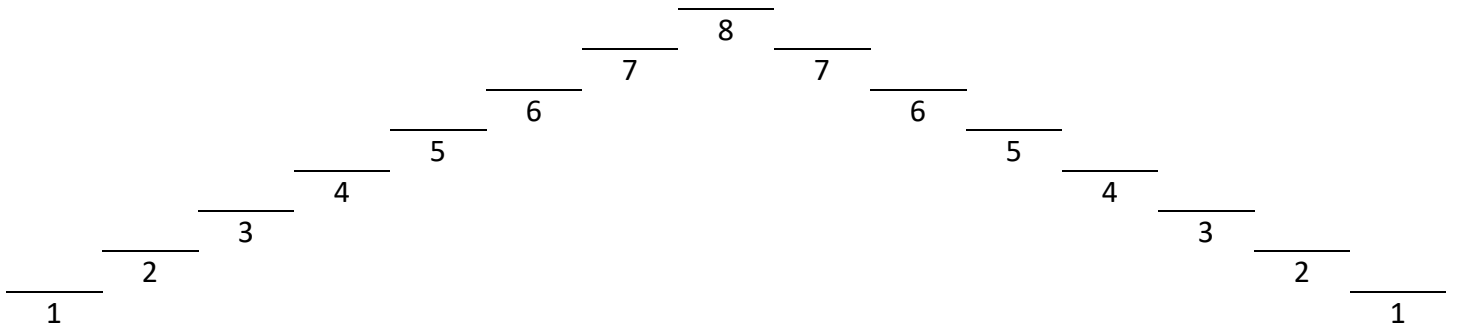
Inverse Scale Pattern

4.
Musical notation for the B scale using quarter notes in an inverse pattern. The key signature has three sharps (F#, C#, G#). The notes are B, A, G#, F#, E, D#, C#, B.

Eighth Note Scale Pattern

5.
Musical notation for the B scale using eighth notes. The key signature has three sharps (F#, C#, G#). The notes are B, C#, D#, E, F#, G#, A, B. A slur covers the last four notes (F#, G#, A, B).

B Scale



Whole Note Scale

1.

Half Note Scale

2.

Standard Scale Pattern

3.

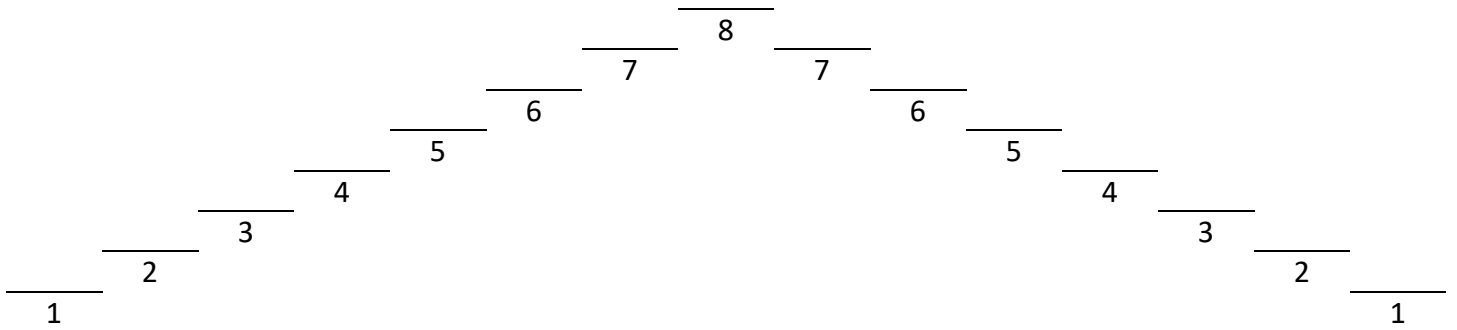
Inverse Scale Pattern

4.

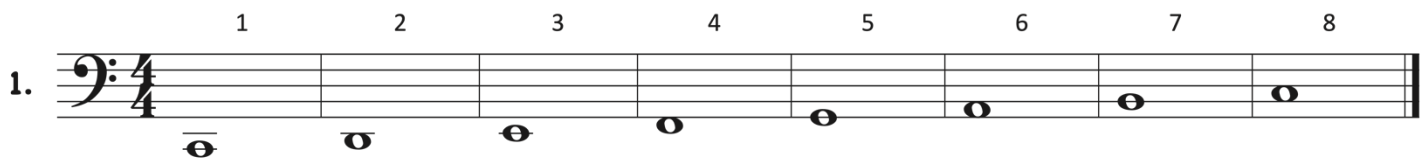
Eighth Note Scale Pattern

5.

C Scale



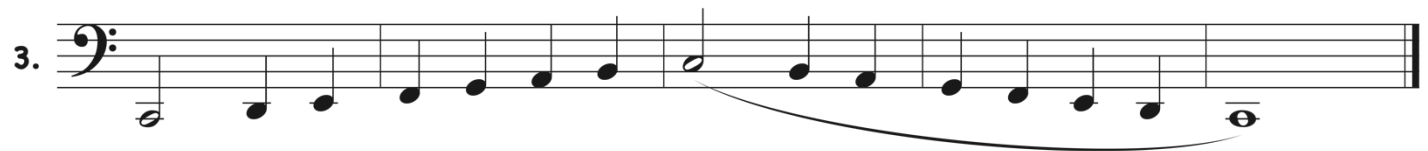
Whole Note Scale



Half Note Scale



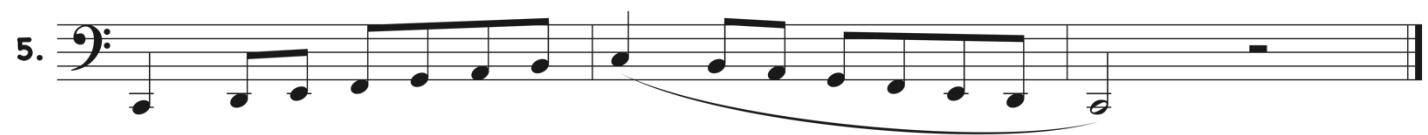
Standard Scale Pattern



Inverse Scale Pattern



Eighth Note Scale Pattern



C Scale

A diagram showing the fingering for the C scale. The notes are represented by horizontal lines with numbers 1 through 8 indicating the finger used. The sequence is: 1 (C), 2 (D), 3 (E), 4 (F), 5 (G), 6 (A), 7 (B), 8 (C), 7 (B), 6 (A), 5 (G), 4 (F), 3 (E), 2 (D), 1 (C).

Whole Note Scale

1.
Musical notation for the C scale using whole notes. The notes are C, D, E, F, G, A, B, C, B, A, G, F, E, D, C. The first measure is in 4/4 time. Fingering numbers 1 through 8 are placed above the notes.

Half Note Scale

2.
Musical notation for the C scale using half notes. The notes are C, D, E, F, G, A, B, C, B, A, G, F, E, D, C.

Standard Scale Pattern

3.
Musical notation for the C scale using eighth notes. The notes are C, D, E, F, G, A, B, C, B, A, G, F, E, D, C. A slur covers the notes from A to C.

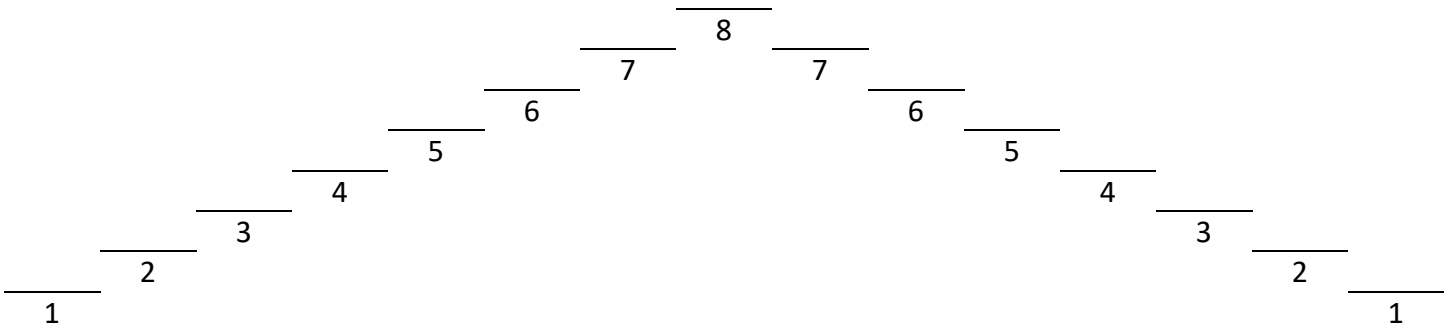
Inverse Scale Pattern

4.
Musical notation for the C scale using eighth notes in an inverse pattern. The notes are C, B, A, G, F, E, D, C, B, A, G, F, E, D, C.

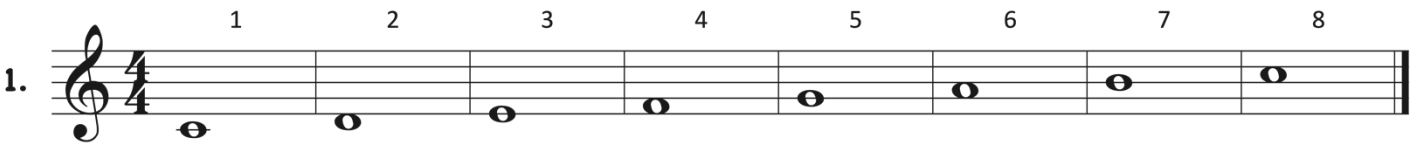
Eighth Note Scale Pattern

5.
Musical notation for the C scale using eighth notes. The notes are C, D, E, F, G, A, B, C, B, A, G, F, E, D, C. A slur covers the notes from A to C.

C Scale



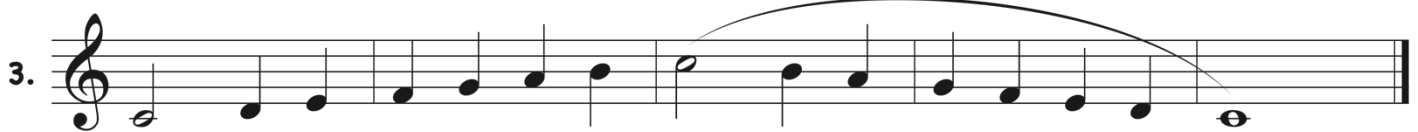
Whole Note Scale



Half Note Scale



Standard Scale Pattern



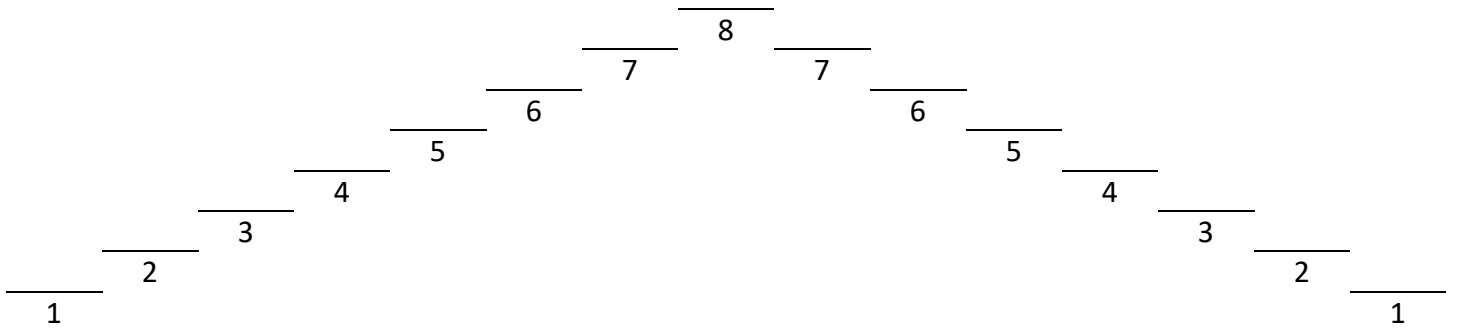
Inverse Scale Pattern



Eighth Note Scale Pattern



C Scale



Whole Note Scale

1. Musical notation for the C scale in 4/4 time using whole notes. The notes are C, D, E, F, G, A, B, C, B, A, G, F, E, D, C. Each note is a whole note. Fingering numbers 1 through 8 are written above the notes.

Half Note Scale

2. Musical notation for the C scale in 4/4 time using half notes. The notes are C, D, E, F, G, A, B, C, B, A, G, F, E, D, C. Each note is a half note.

Standard Scale Pattern

3. Musical notation for the C scale in 4/4 time using quarter notes. The notes are C, D, E, F, G, A, B, C, B, A, G, F, E, D, C. A slur covers the notes from G to C.

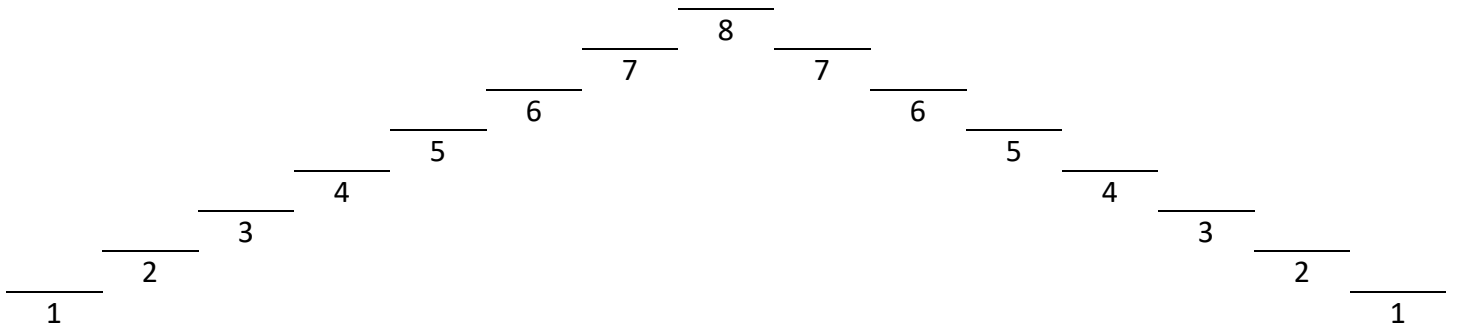
Inverse Scale Pattern

4. Musical notation for the C scale in 4/4 time using quarter notes in an inverse pattern. The notes are C, B, A, G, F, E, D, C, B, A, G, F, E, D, C.

Eighth Note Scale Pattern

5. Musical notation for the C scale in 4/4 time using eighth notes. The notes are C, D, E, F, G, A, B, C, B, A, G, F, E, D, C. A slur covers the notes from G to C.

C Scale



Whole Note Scale

1. Musical staff with a treble clef and a 4/4 time signature. It contains eight whole notes: C, D, E, F, G, A, B, and C. Each note has a finger number written below it: 1, 2, 3, 4, 5, 6, 7, 8.

Half Note Scale

2. Musical staff with a treble clef and a 4/4 time signature. It contains sixteen half notes: C, D, E, F, G, A, B, C, B, A, G, F, E, D, C.

Standard Scale Pattern

3. Musical staff with a treble clef and a 4/4 time signature. It contains sixteen eighth notes: C, D, E, F, G, A, B, C, B, A, G, F, E, D, C. A slur covers the notes from G to C.

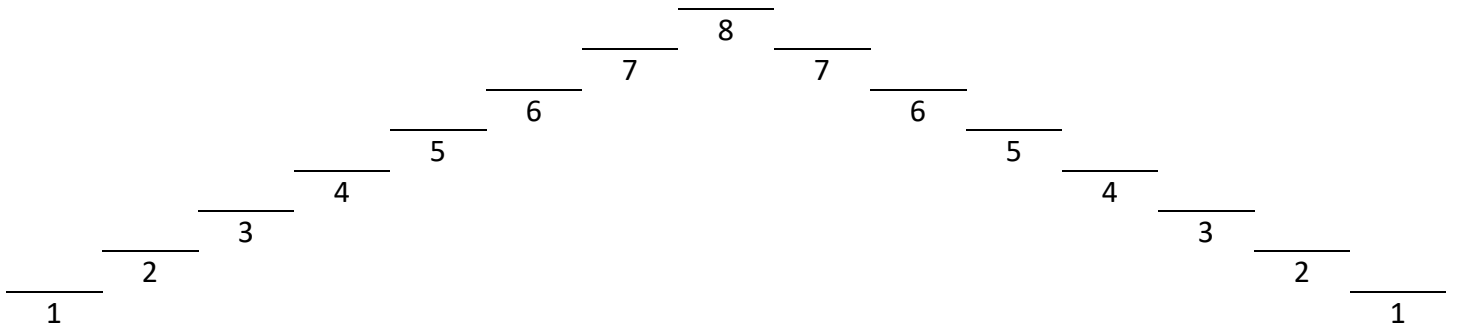
Inverse Scale Pattern

4. Musical staff with a treble clef and a 4/4 time signature. It contains sixteen eighth notes: C, B, A, G, F, E, D, C, B, A, G, F, E, D, C.

Eighth Note Scale Pattern

5. Musical staff with a treble clef and a 4/4 time signature. It contains sixteen eighth notes: C, D, E, F, G, A, B, C, B, A, G, F, E, D, C. A slur covers the notes from G to C.

D^b Scale



Whole Note Scale

1.
Musical notation for the whole note scale in D^b major. The key signature has two flats (B^b and E^b). The scale is written in bass clef with a 4/4 time signature. The notes are: D^b, E^b, F, G, A, B^b, C, D^b. Each note is a whole note. Fingerings 1 through 8 are indicated above the notes.

Half Note Scale

2.
Musical notation for the half note scale in D^b major. The key signature has two flats (B^b and E^b). The scale is written in bass clef. The notes are: D^b, E^b, F, G, A, B^b, C, D^b. Each note is a half note.

Standard Scale Pattern

3.
Musical notation for the standard scale pattern in D^b major. The key signature has two flats (B^b and E^b). The scale is written in bass clef. The notes are: D^b, E^b, F, G, A, B^b, C, D^b. The first four notes (D^b, E^b, F, G) are circled in blue. A slur covers the last four notes (A, B^b, C, D^b).

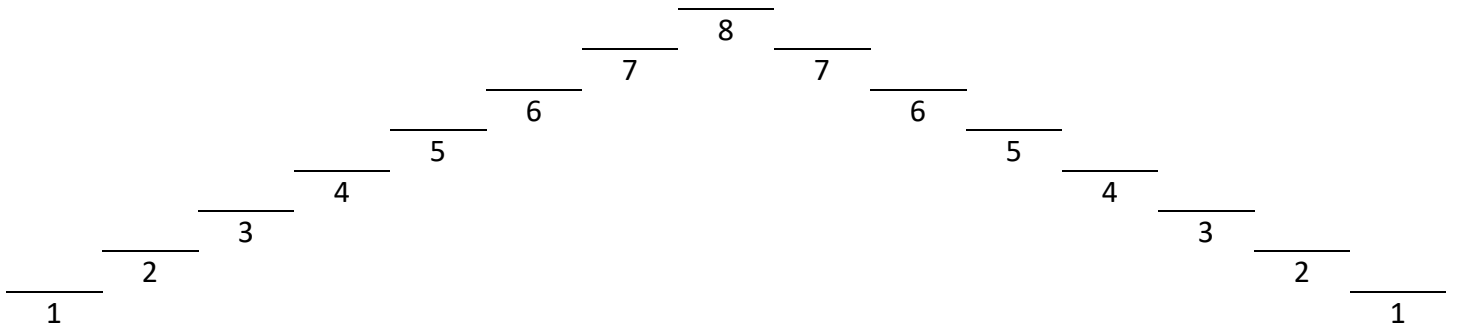
Inverse Scale Pattern

4.
Musical notation for the inverse scale pattern in D^b major. The key signature has two flats (B^b and E^b). The scale is written in bass clef. The notes are: D^b, E^b, F, G, A, B^b, C, D^b. The notes are played in descending order.

Eighth Note Scale Pattern

5.
Musical notation for the eighth note scale pattern in D^b major. The key signature has two flats (B^b and E^b). The scale is written in bass clef. The notes are: D^b, E^b, F, G, A, B^b, C, D^b. The notes are played in eighth notes. A slur covers the last four notes (A, B^b, C, D^b).

D^b Scale



Whole Note Scale

1.

Half Note Scale

2.

Standard Scale Pattern

3.

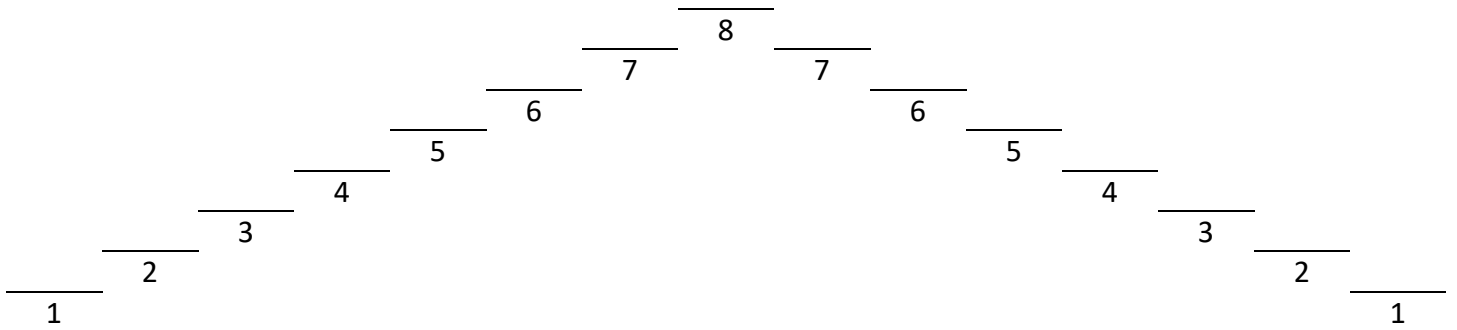
Inverse Scale Pattern

4.

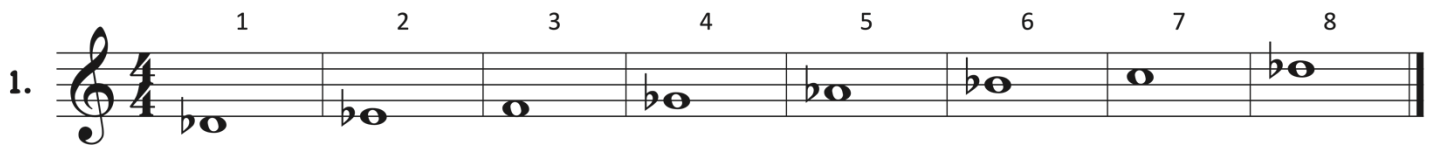
Eighth Note Scale Pattern

5.

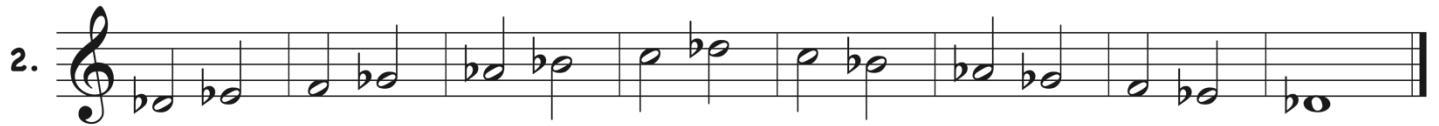
D^b Scale



Whole Note Scale



Half Note Scale



Standard Scale Pattern



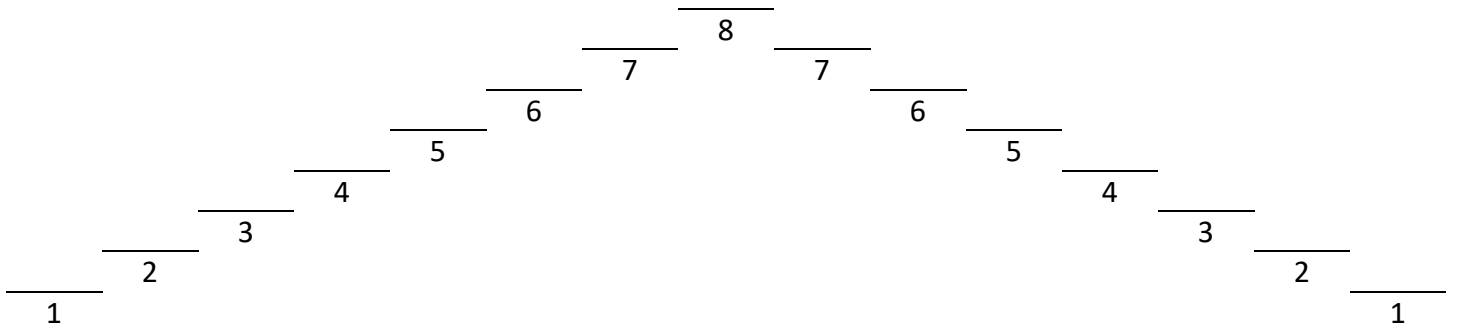
Inverse Scale Pattern



Eighth Note Scale Pattern



D^b Scale



Whole Note Scale

1.
Musical notation for the whole note scale in D-flat major. The key signature has two flats (B-flat and E-flat). The scale is written in 4/4 time with whole notes. The notes are: D^b (1), E^b (2), F^b (3), G^b (4), A^b (5), B^b (6), C^b (7), D^b (8).

Half Note Scale

2.
Musical notation for the half note scale in D-flat major. The key signature has two flats. The scale is written in 4/4 time with half notes. The notes are: D^b, E^b, F^b, G^b, A^b, B^b, C^b, D^b, C^b, B^b, A^b, G^b, F^b, E^b, D^b.

Standard Scale Pattern

3.
Musical notation for the standard scale pattern in D-flat major. The key signature has two flats. The scale is written in 4/4 time with quarter notes. The notes are: D^b, E^b, F^b, G^b, A^b, B^b, C^b, D^b, C^b, B^b, A^b, G^b, F^b, E^b, D^b. A blue circle highlights the first four notes (D^b, E^b, F^b, G^b).

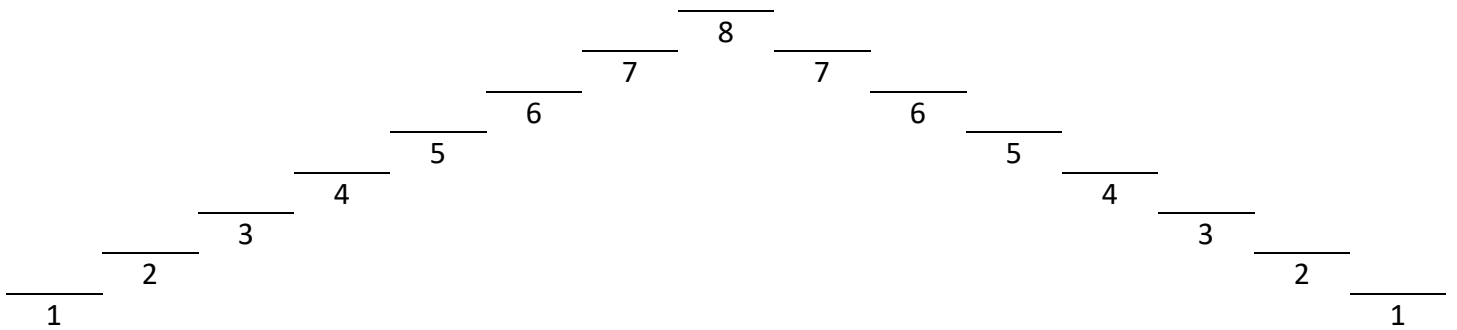
Inverse Scale Pattern

4.
Musical notation for the inverse scale pattern in D-flat major. The key signature has two flats. The scale is written in 4/4 time with quarter notes. The notes are: D^b, C^b, B^b, A^b, G^b, F^b, E^b, D^b, C^b, B^b, A^b, G^b, F^b, E^b, D^b.

Eighth Note Scale Pattern

5.
Musical notation for the eighth note scale pattern in D-flat major. The key signature has two flats. The scale is written in 4/4 time with eighth notes. The notes are: D^b, E^b, F^b, G^b, A^b, B^b, C^b, D^b, C^b, B^b, A^b, G^b, F^b, E^b, D^b.

D Scale



Whole Note Scale

1.
Musical notation for the D scale using whole notes. The notes are D, E, F#, G, A, B, C#, and D. The key signature has two sharps (F# and C#). The notes are numbered 1 through 8 above the staff.

Half Note Scale

2.
Musical notation for the D scale using half notes. The notes are D, E, F#, G, A, B, C#, and D. The key signature has two sharps (F# and C#).

Standard Scale Pattern

3.
Musical notation for the D scale using a standard scale pattern. The notes are D, E, F#, G, A, B, C#, and D. The key signature has two sharps (F# and C#). The first two sharps are circled in blue.

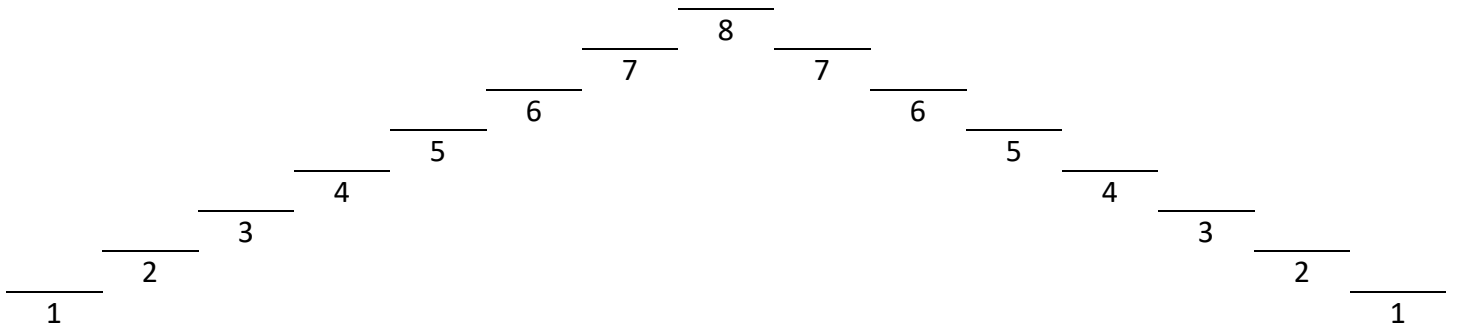
Inverse Scale Pattern

4.
Musical notation for the D scale using an inverse scale pattern. The notes are D, C#, B, A, G, F#, E, and D. The key signature has two sharps (F# and C#).

Eighth Note Scale Pattern

5.
Musical notation for the D scale using an eighth note scale pattern. The notes are D, E, F#, G, A, B, C#, and D. The key signature has two sharps (F# and C#).

D Scale



Whole Note Scale

1.
A musical staff in bass clef with a 4/4 time signature. It contains eight whole notes: D, E, F#, G, A, B, C#, and D. Fingerings 1 through 8 are written above each note.

Half Note Scale

2.
A musical staff in bass clef with a 4/4 time signature. It contains sixteen half notes: D, E, F#, G, A, B, C#, D, C#, B, A, G, F#, E, D.

Standard Scale Pattern

3.
A musical staff in bass clef with a 4/4 time signature. It contains sixteen eighth notes: D, E, F#, G, A, B, C#, D, C#, B, A, G, F#, E, D. The first two notes (D and E) are circled in blue. A slur covers the notes from G to D.

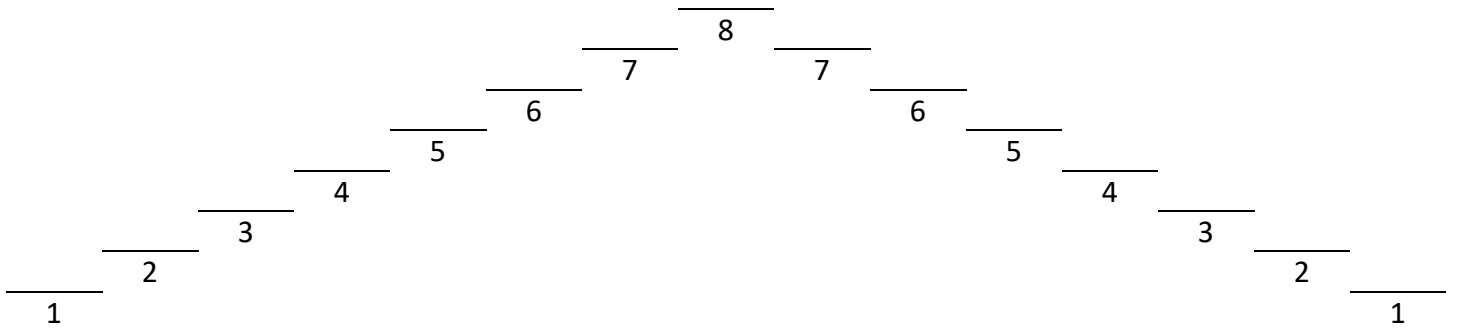
Inverse Scale Pattern

4.
A musical staff in bass clef with a 4/4 time signature. It contains sixteen eighth notes: D, C#, B, A, G, F#, E, D, C#, B, A, G, F#, E, D.

Eighth Note Scale Pattern

5.
A musical staff in bass clef with a 4/4 time signature. It contains sixteen eighth notes: D, E, F#, G, A, B, C#, D, C#, B, A, G, F#, E, D. A slur covers the notes from G to D.

D Scale



Whole Note Scale

1. Musical notation for the D scale using whole notes. The key signature has two sharps (F# and C#). The notes are D4, E4, F#4, G4, A4, B4, C#5, and D5. Fingerings 1 through 8 are indicated above each note.

Half Note Scale

2. Musical notation for the D scale using half notes. The key signature has two sharps (F# and C#). The notes are D4, E4, F#4, G4, A4, B4, C#5, and D5. Fingerings 1 through 8 are indicated above each note.

Standard Scale Pattern

3. Musical notation for the D scale using a standard eighth-note scale pattern. The key signature has two sharps (F# and C#). The notes are D4, E4, F#4, G4, A4, B4, C#5, and D5. A slur covers the notes from G4 to D5. The first sharp (F#) is circled in blue.

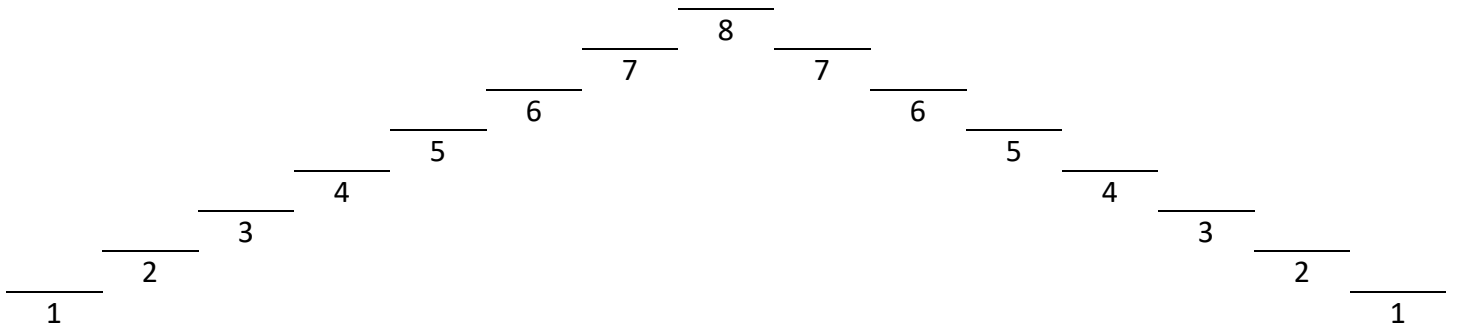
Inverse Scale Pattern

4. Musical notation for the D scale using an inverse eighth-note scale pattern. The key signature has two sharps (F# and C#). The notes are D4, C#4, B3, A3, G3, F#3, E3, D3, C#3, B2, A2, G2, F#2, E2, D2. The first sharp (F#) is circled in blue.

Eighth Note Scale Pattern

5. Musical notation for the D scale using an eighth-note scale pattern. The key signature has two sharps (F# and C#). The notes are D4, E4, F#4, G4, A4, B4, C#5, and D5. A slur covers the notes from G4 to D5. The first sharp (F#) is circled in blue.

D Scale



Whole Note Scale

1.
Musical notation for the D scale in 4/4 time using whole notes. The notes are D, E, F#, G, A, B, C, D, with fingerings 1 through 8 indicated above each note.

Half Note Scale

2.
Musical notation for the D scale in 4/4 time using half notes. The notes are D, E, F#, G, A, B, C, D, with fingerings 1 through 8 indicated above each note.

Standard Scale Pattern

3.
Musical notation for the D scale in 4/4 time using quarter notes. The notes are D, E, F#, G, A, B, C, D, with fingerings 1 through 8 indicated above each note. A slur is placed over the last four notes (A, B, C, D).

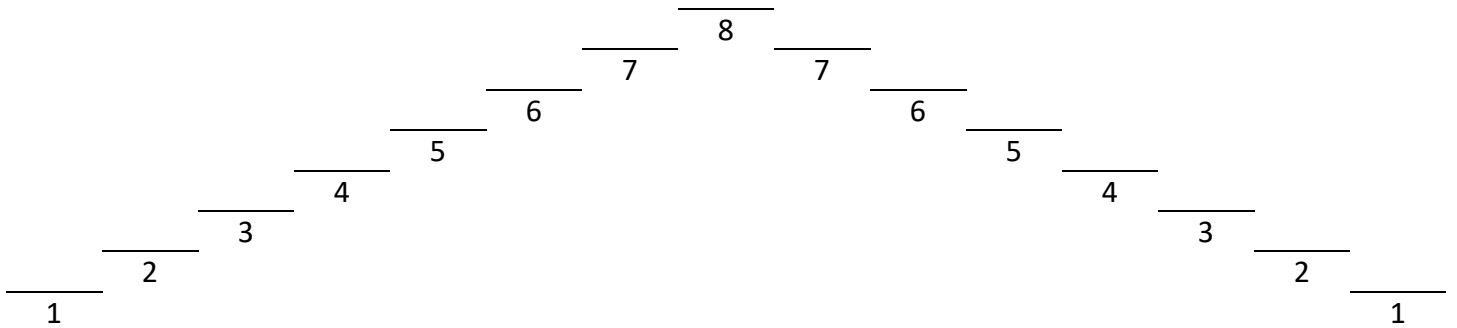
Inverse Scale Pattern

4.
Musical notation for the D scale in 4/4 time using quarter notes in an inverse pattern (D, C, B, A, G, F#, E, D). The notes are D, C, B, A, G, F#, E, D, with fingerings 8 through 1 indicated above each note.

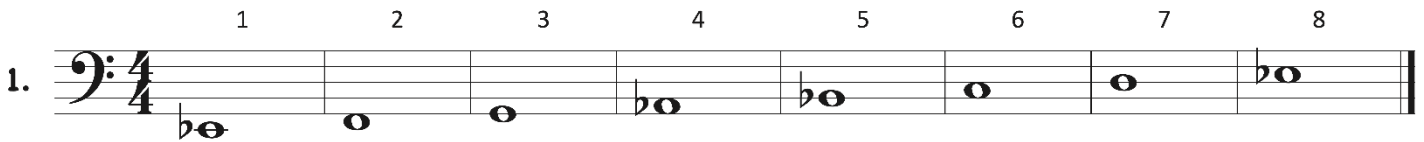
Eighth Note Scale Pattern

5.
Musical notation for the D scale in 4/4 time using eighth notes. The notes are D, E, F#, G, A, B, C, D, with fingerings 1 through 8 indicated above each note. A slur is placed over the last four notes (A, B, C, D).

E^b Scale



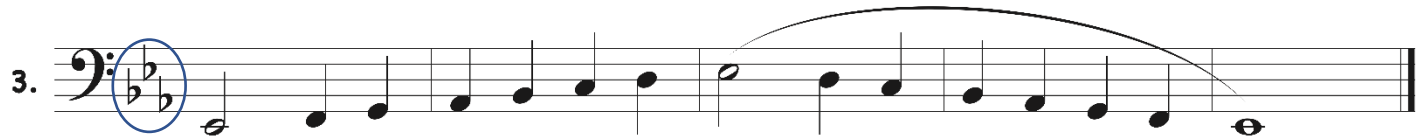
Whole Note Scale



Half Note Scale



Standard Scale Pattern



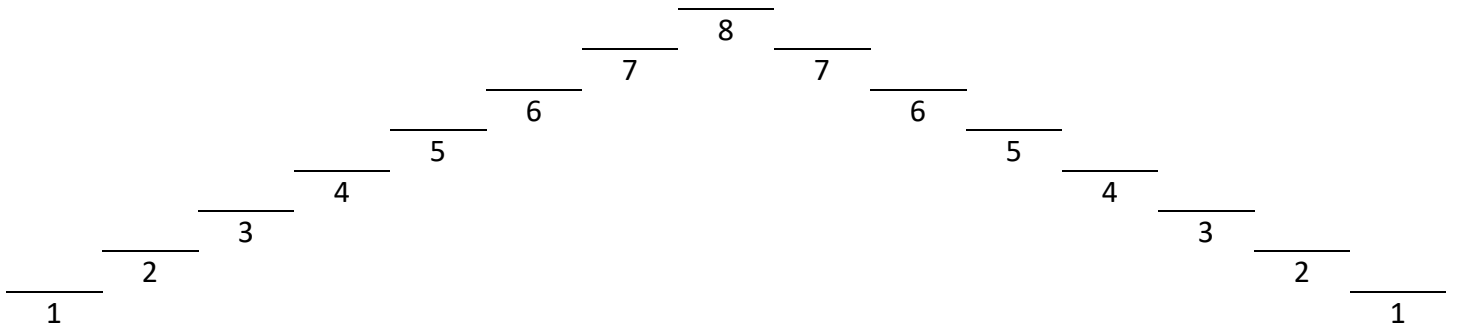
Inverse Scale Pattern



Eighth Note Scale Pattern



E^b Scale



Whole Note Scale

1. Musical notation for the whole note E-flat scale. The key signature has two flats (B-flat and E-flat), and the time signature is 4/4. The notes are: E-flat, F, G, A-flat, B-flat, C, D, E-flat, D, C, B-flat, A-flat, G, F, E-flat. Each note is a whole note, and the scale is numbered 1 through 8 above the notes.

Half Note Scale

2. Musical notation for the half note E-flat scale. The key signature has two flats (B-flat and E-flat), and the time signature is 4/4. The notes are: E-flat, F, G, A-flat, B-flat, C, D, E-flat, D, C, B-flat, A-flat, G, F, E-flat. Each note is a half note.

Standard Scale Pattern

3. Musical notation for the standard scale pattern of the E-flat scale. The key signature has two flats (B-flat and E-flat), and the time signature is 4/4. The notes are: E-flat, F, G, A-flat, B-flat, C, D, E-flat, D, C, B-flat, A-flat, G, F, E-flat. The first two notes (E-flat and F) are circled in blue. A slur covers the notes from D to E-flat.

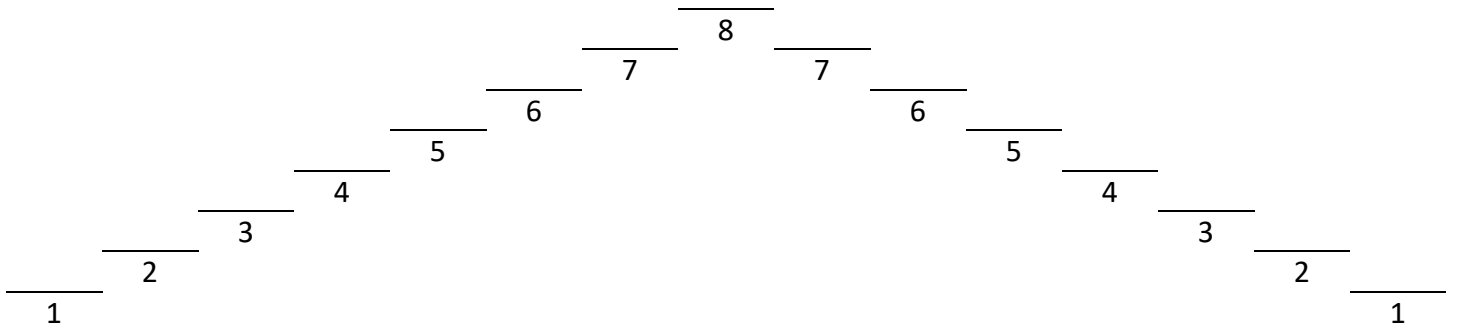
Inverse Scale Pattern

4. Musical notation for the inverse scale pattern of the E-flat scale. The key signature has two flats (B-flat and E-flat), and the time signature is 4/4. The notes are: E-flat, F, G, A-flat, B-flat, C, D, E-flat, D, C, B-flat, A-flat, G, F, E-flat. A slur covers the notes from D to E-flat.

Eighth Note Scale Pattern

5. Musical notation for the eighth note scale pattern of the E-flat scale. The key signature has two flats (B-flat and E-flat), and the time signature is 4/4. The notes are: E-flat, F, G, A-flat, B-flat, C, D, E-flat, D, C, B-flat, A-flat, G, F, E-flat. A slur covers the notes from D to E-flat.

E^b Scale



Whole Note Scale

1. Musical notation for the whole note E^b scale. The key signature has two flats (B^b and E^b). The scale is written in a single staff with a treble clef and a 4/4 time signature. The notes are: E^b (whole), F (whole), G (whole), A^b (whole), B^b (whole), C (whole), D (whole), E^b (whole). Fingerings 1 through 8 are indicated above each note.

Half Note Scale

2. Musical notation for the half note E^b scale. The key signature has two flats. The scale is written in a single staff with a treble clef and a 4/4 time signature. The notes are: E^b, F, G, A^b, B^b, C, D, E^b. Each note is a half note.

Standard Scale Pattern

3. Musical notation for the standard scale pattern of the E^b scale. The key signature has two flats. The scale is written in a single staff with a treble clef and a 4/4 time signature. The notes are: E^b, F, G, A^b, B^b, C, D, E^b. The first two flats in the key signature are circled in blue.

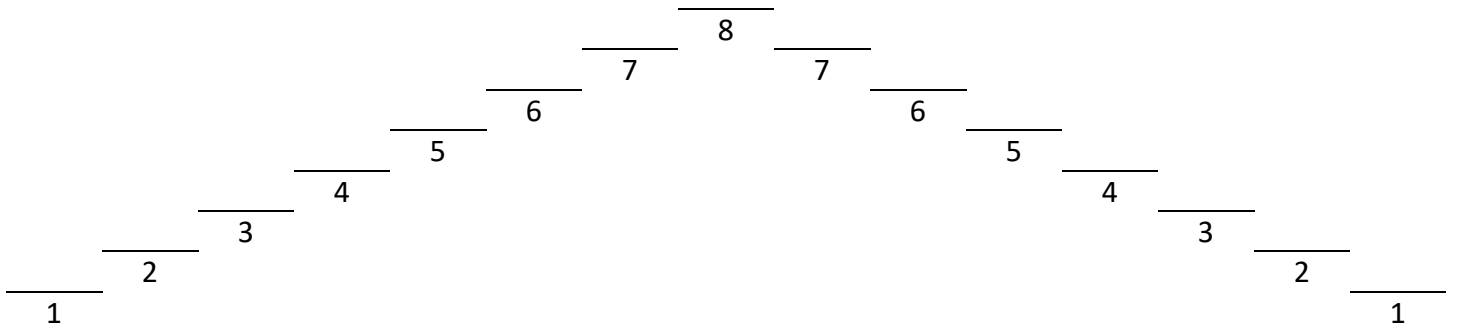
Inverse Scale Pattern

4. Musical notation for the inverse scale pattern of the E^b scale. The key signature has two flats. The scale is written in a single staff with a treble clef and a 4/4 time signature. The notes are: E^b, D, C, B^b, A^b, G, F, E^b.

Eighth Note Scale Pattern

5. Musical notation for the eighth note scale pattern of the E^b scale. The key signature has two flats. The scale is written in a single staff with a treble clef and a 4/4 time signature. The notes are: E^b, F, G, A^b, B^b, C, D, E^b. The notes are beamed together in groups of four.

E^b Scale



Whole Note Scale

1. Musical notation for the whole note E^b scale in 4/4 time. The notes are E^b, F, G, A, B, C, D, E, F, G, A, B, C, D, E^b, each held for a whole note. Fingerings 1 through 8 are indicated above the notes.

Half Note Scale

2. Musical notation for the half note E^b scale in 4/4 time. The notes are E^b, F, G, A, B, C, D, E, F, G, A, B, C, D, E^b, each held for a half note.

Standard Scale Pattern

3. Musical notation for the standard scale pattern of the E^b scale in 4/4 time. The notes are E^b, F, G, A, B, C, D, E, F, G, A, B, C, D, E^b. The first two notes, E^b and F, are circled in blue. A slur covers the notes from G to E^b.

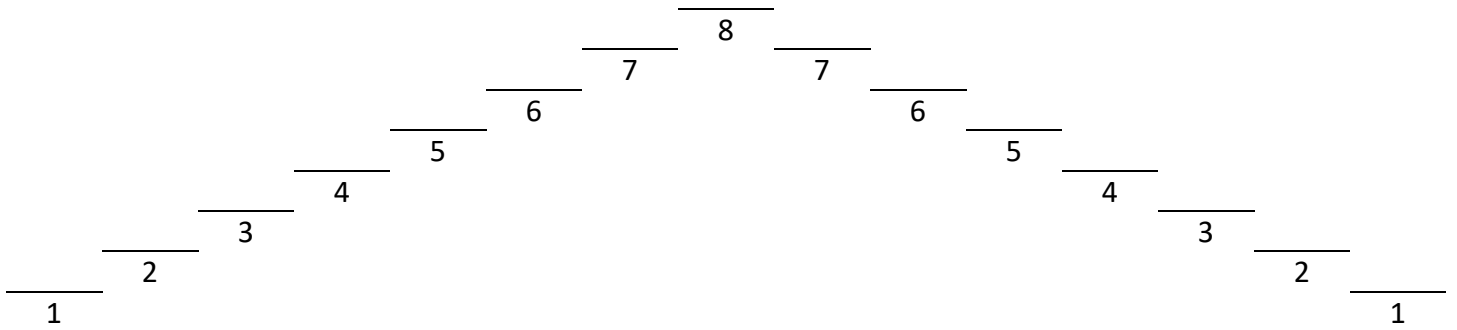
Inverse Scale Pattern

4. Musical notation for the inverse scale pattern of the E^b scale in 4/4 time. The notes are E^b, D, C, B, A, G, F, E, D, C, B, A, G, F, E^b.

Eighth Note Scale Pattern

5. Musical notation for the eighth note scale pattern of the E^b scale in 4/4 time. The notes are E^b, F, G, A, B, C, D, E, F, G, A, B, C, D, E^b, each held for an eighth note. A slur covers the notes from G to E^b.

E^b Scale



1. **Whole Note Scale**

Musical notation for the whole note scale in E^b major. The key signature has two flats (B^b and E^b). The scale is written in 4/4 time with whole notes. The notes are: E^b (1), F (2), G (3), A^b (4), B^b (5), C (6), D (7), E^b (8).

2. **Half Note Scale**

Musical notation for the half note scale in E^b major. The key signature has two flats. The scale is written in 4/4 time with half notes. The notes are: E^b, F, G, A^b, B^b, C, D, E^b, F, G, A^b, B^b, C, D, E^b.

3. **Standard Scale Pattern**

Musical notation for the standard scale pattern in E^b major. The key signature has two flats. The scale is written in 4/4 time with quarter notes. The notes are: E^b, F, G, A^b, B^b, C, D, E^b, F, G, A^b, B^b, C, D, E^b. A blue circle highlights the first two notes (E^b and F). A slur covers the last six notes (C, D, E^b, F, G, A^b).

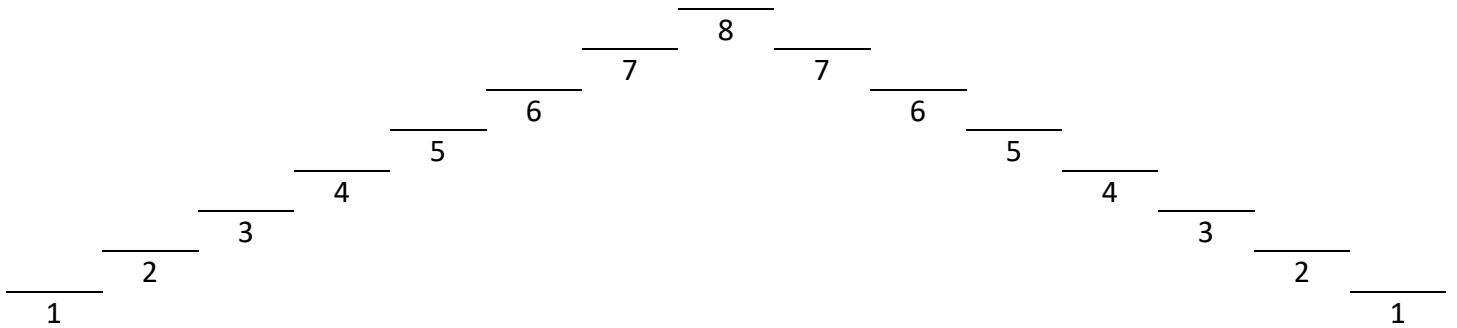
4. **Inverse Scale Pattern**

Musical notation for the inverse scale pattern in E^b major. The key signature has two flats. The scale is written in 4/4 time with quarter notes. The notes are: E^b, F, G, A^b, B^b, C, D, E^b, F, G, A^b, B^b, C, D, E^b. A slur covers the last six notes (C, D, E^b, F, G, A^b).

5. **Eighth Note Scale Pattern**

Musical notation for the eighth note scale pattern in E^b major. The key signature has two flats. The scale is written in 4/4 time with eighth notes. The notes are: E^b, F, G, A^b, B^b, C, D, E^b, F, G, A^b, B^b, C, D, E^b. A slur covers the last six notes (C, D, E^b, F, G, A^b).

E Scale



Whole Note Scale

1. *Whole Note Scale*

Musical notation for the whole note E scale in bass clef, 4/4 time. The notes are E, F#, G#, A, B, C#, D#, and E, each held for a whole note. Fingerings 1 through 8 are indicated above the notes.

Half Note Scale

2. *Half Note Scale*

Musical notation for the half note E scale in bass clef, 4/4 time. The notes are E, F#, G#, A, B, C#, D#, and E, each held for a half note.

Standard Scale Pattern

3. *Standard Scale Pattern*

Musical notation for the standard scale pattern of the E scale in bass clef, 4/4 time. The notes are E, F#, G#, A, B, C#, D#, and E, each held for a quarter note. A blue circle highlights the first four notes (E, F#, G#, A). A slur covers the last four notes (B, C#, D#, E).

Inverse Scale Pattern

4. *Inverse Scale Pattern*

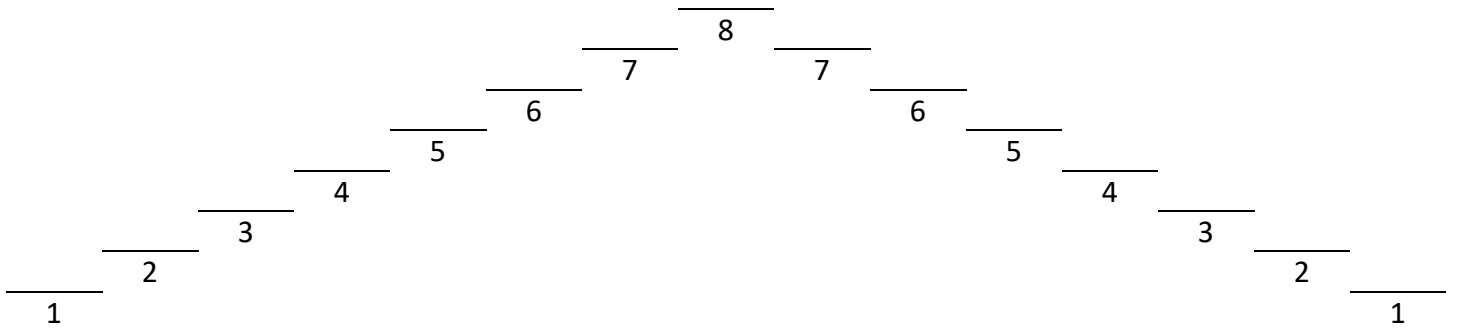
Musical notation for the inverse scale pattern of the E scale in bass clef, 4/4 time. The notes are E, D#, C#, B, A, G#, F#, and E, each held for a quarter note. A blue circle highlights the first four notes (E, D#, C#, B).

Eighth Note Scale Pattern

5. *Eighth Note Scale Pattern*

Musical notation for the eighth note scale pattern of the E scale in bass clef, 4/4 time. The notes are E, F#, G#, A, B, C#, D#, and E, each held for an eighth note. A slur covers the last four notes (B, C#, D#, E).

E Scale



Whole Note Scale

1. Musical notation for the E scale in whole notes. The key signature is one sharp (F#) and the time signature is 4/4. The notes are E, F#, G#, A, B, C#, D#, and E, each held for a whole note. Fingerings 1 through 8 are indicated above the notes.

Half Note Scale

2. Musical notation for the E scale in half notes. The key signature is one sharp (F#) and the time signature is 4/4. The notes are E, F#, G#, A, B, C#, D#, and E, each held for a half note.

Standard Scale Pattern

3. Musical notation for the E scale in a standard scale pattern. The key signature is one sharp (F#) and the time signature is 4/4. The notes are E, F#, G#, A, B, C#, D#, and E, each held for a quarter note. A blue circle highlights the first four notes (E, F#, G#, A). A slur covers the last four notes (B, C#, D#, E).

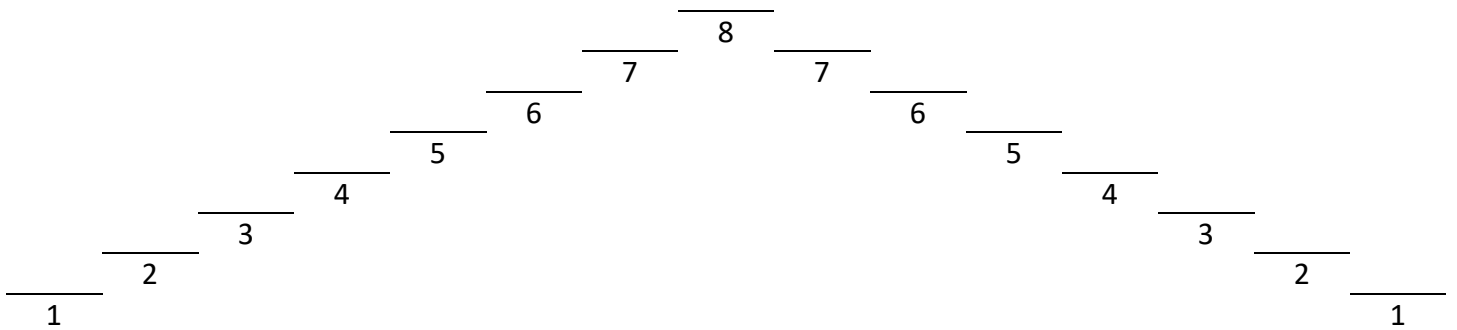
Inverse Scale Pattern

4. Musical notation for the E scale in an inverse scale pattern. The key signature is one sharp (F#) and the time signature is 4/4. The notes are E, D#, C#, B, A, G#, F#, and E, each held for a quarter note.

Eighth Note Scale Pattern

5. Musical notation for the E scale in an eighth note scale pattern. The key signature is one sharp (F#) and the time signature is 4/4. The notes are E, F#, G#, A, B, C#, D#, and E, each held for an eighth note.

E Scale



Whole Note Scale

1.

Half Note Scale

2.

Standard Scale Pattern

3.

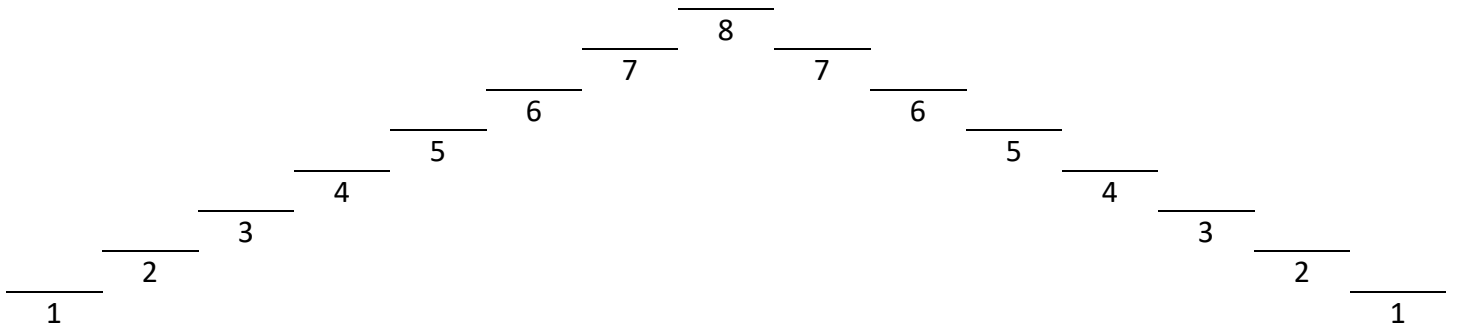
Inverse Scale Pattern

4.

Eighth Note Scale Pattern

5.

E Scale



Whole Note Scale

1. Musical notation for the whole note E scale in treble clef, 4/4 time. The notes are E4, F#4, G#4, A4, B4, C#5, D#5, and E5. Each note is a whole note. Fingerings 1 through 8 are indicated above the notes.

Half Note Scale

2. Musical notation for the half note E scale in treble clef, 4/4 time. The notes are E4, F#4, G#4, A4, B4, C#5, D#5, E5, D#5, C#5, B4, A4, G#4, F#4, and E4. Each note is a half note.

Standard Scale Pattern

3. Musical notation for the standard scale pattern of the E scale in treble clef, 4/4 time. The notes are E4, F#4, G#4, A4, B4, C#5, D#5, E5, D#5, C#5, B4, A4, G#4, F#4, and E4. The first three notes (F#4, G#4, A4) are circled in blue. A slur covers the notes from B4 to E4.

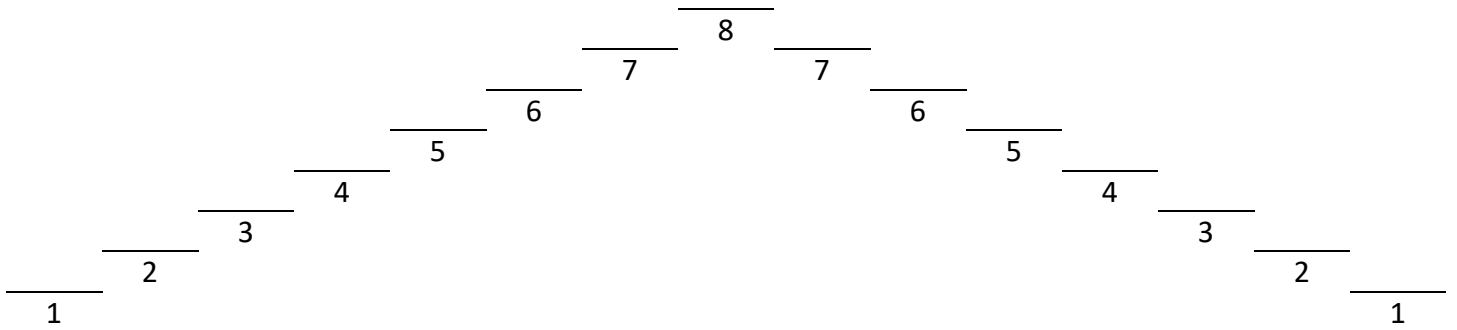
Inverse Scale Pattern

4. Musical notation for the inverse scale pattern of the E scale in treble clef, 4/4 time. The notes are E4, D#4, C#4, B3, A3, G3, F#3, E3, D3, C3, B2, A2, G2, F#2, and E2. The first three notes (F#2, G2, A2) are circled in blue.

Eighth Note Scale Pattern

5. Musical notation for the eighth note scale pattern of the E scale in treble clef, 4/4 time. The notes are E4, F#4, G#4, A4, B4, C#5, D#5, E5, D#5, C#5, B4, A4, G#4, F#4, and E4. A slur covers the notes from B4 to E4.

E Scale



Whole Note Scale

1.
Musical notation for the E scale in 4/4 time using whole notes. The notes are E, F#, G, A, B, C#, D, and E, each held for one measure. Fingerings 1 through 8 are indicated above the notes.

Half Note Scale

2.
Musical notation for the E scale in 4/4 time using half notes. The notes are E, F#, G, A, B, C#, D, and E, each held for two measures. Fingerings 1 through 8 are indicated above the notes.

Standard Scale Pattern

3.
Musical notation for the E scale in 4/4 time using quarter notes. The notes are E, F#, G, A, B, C#, D, and E, each held for one measure. A blue circle highlights the key signature (three sharps). A slur is placed over the final four notes (B, C#, D, E).

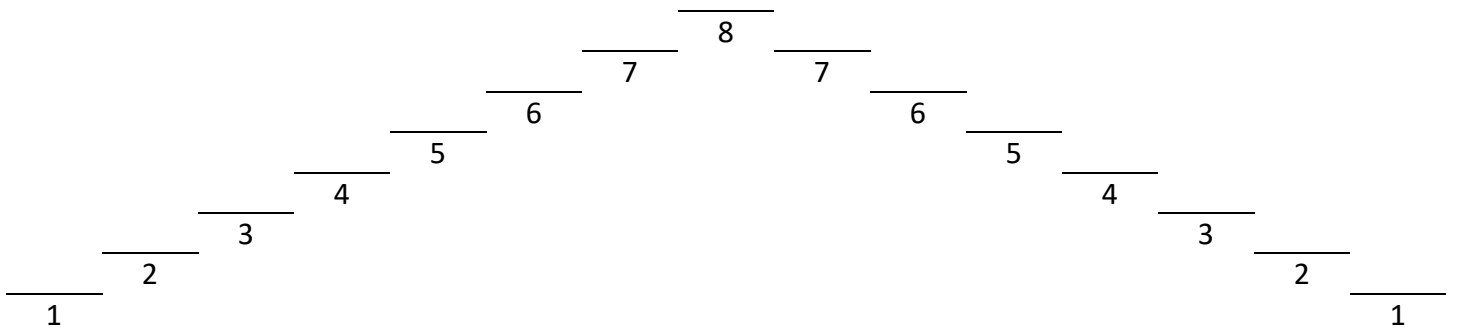
Inverse Scale Pattern

4.
Musical notation for the E scale in 4/4 time using quarter notes in descending order: E, D, C#, B, A, G, F#, E. A blue circle highlights the key signature (three sharps). A slur is placed over the final four notes (B, C#, D, E).

Eighth Note Scale Pattern

5.
Musical notation for the E scale in 4/4 time using eighth notes. The notes are E, F#, G, A, B, C#, D, and E, each held for two measures. A blue circle highlights the key signature (three sharps). A slur is placed over the final four notes (B, C#, D, E).

F Scale



Whole Note Scale

1. *Whole Note Scale*

Musical notation for the whole note F scale in bass clef, 4/4 time. The notes are: F2, C3, F3, Bb2, C3, D3, E3, F3, G3, A3, Bb3, C4. Fingering numbers 1 through 8 are placed above the notes.

Half Note Scale

2. *Half Note Scale*

Musical notation for the half note F scale in bass clef, 4/4 time. The notes are: F2, C3, F3, Bb2, C3, D3, E3, F3, G3, A3, Bb3, C4.

Standard Scale Pattern

3. *Standard Scale Pattern*

Musical notation for the standard scale pattern of the F scale in bass clef, 4/4 time. The notes are: F2, C3, F3, Bb2, C3, D3, E3, F3, G3, A3, Bb3, C4. A blue circle highlights the F2 note and the bass clef. A slur covers the notes from F3 to C4.

Inverse Scale Pattern

4. *Inverse Scale Pattern*

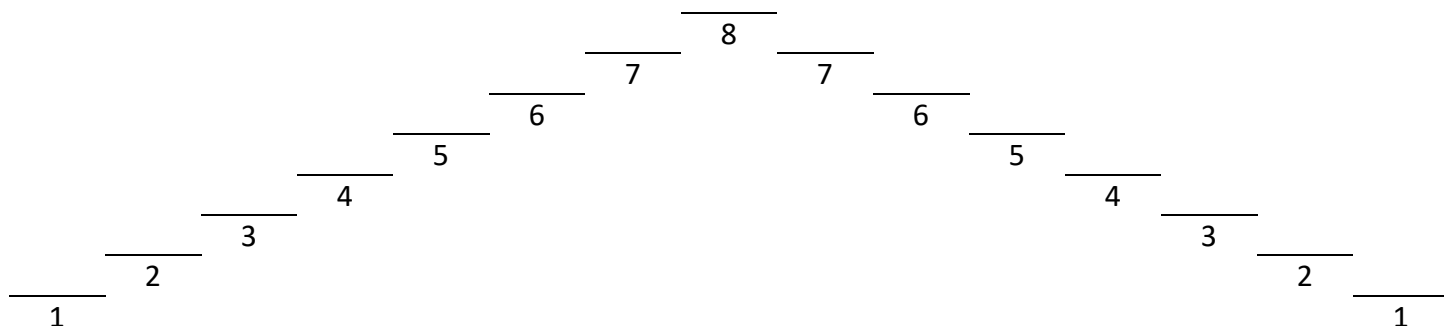
Musical notation for the inverse scale pattern of the F scale in bass clef, 4/4 time. The notes are: C4, Bb3, A3, G3, F3, E3, D3, C3, Bb2, A2, G2, F2.

Eighth Note Scale Pattern

5. *Eighth Note Scale Pattern*

Musical notation for the eighth note scale pattern of the F scale in bass clef, 4/4 time. The notes are: F2, C3, F3, Bb2, C3, D3, E3, F3, G3, A3, Bb3, C4. A slur covers the notes from F3 to C4.

F Scale



Whole Note Scale

1. Musical notation for the whole note F scale. The key signature has one flat (Bb) and the time signature is 4/4. The notes are: F (1), G (2), A (3), Bb (4), C (5), D (6), E (7), F (8). Each note is a whole note.

Half Note Scale

2. Musical notation for the half note F scale. The key signature has one flat (Bb) and the time signature is 4/4. The notes are: F (1), G (2), A (3), Bb (4), C (5), D (6), E (7), F (8). Each note is a half note.

Standard Scale Pattern

3. Musical notation for the standard scale pattern of the F scale. The key signature has one flat (Bb) and the time signature is 4/4. The notes are: F (1), G (2), A (3), Bb (4), C (5), D (6), E (7), F (8). The first note (F) is circled in blue. A slur covers the notes from D to F.

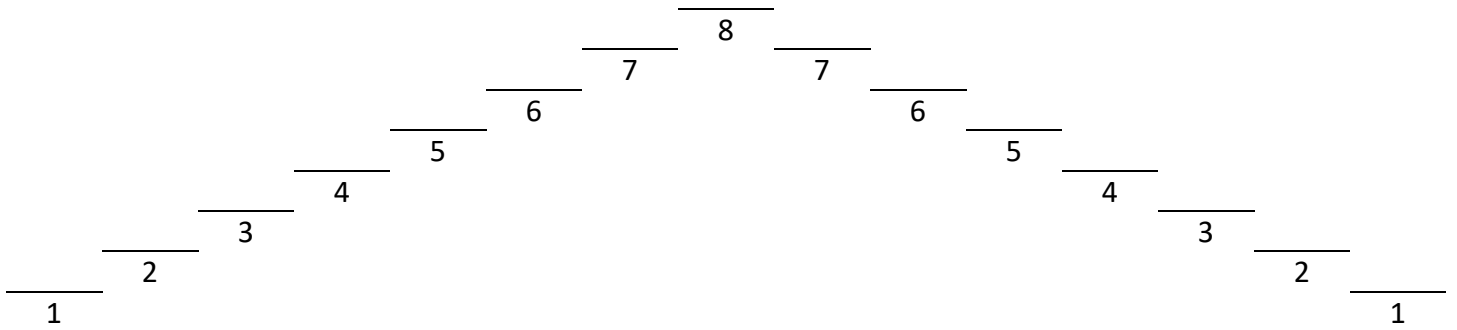
Inverse Scale Pattern

4. Musical notation for the inverse scale pattern of the F scale. The key signature has one flat (Bb) and the time signature is 4/4. The notes are: F (1), G (2), A (3), Bb (4), C (5), D (6), E (7), F (8). A slur covers the notes from F to D.

Eighth Note Scale Pattern

5. Musical notation for the eighth note scale pattern of the F scale. The key signature has one flat (Bb) and the time signature is 4/4. The notes are: F (1), G (2), A (3), Bb (4), C (5), D (6), E (7), F (8). A slur covers the notes from D to F.

F Scale



Whole Note Scale

1. Musical notation for the F scale in whole notes. The key signature has one flat (Bb). The notes are: F1, F2, F3, F4 (Bb), F5, F6, F7, F8. Each note is a whole note with a finger number above it: 1, 2, 3, 4, 5, 6, 7, 8.

Half Note Scale

2. Musical notation for the F scale in half notes. The key signature has one flat (Bb). The notes are: F1, F2, F3, F4 (Bb), F5, F6, F7, F8. Each note is a half note.

Standard Scale Pattern

3. Musical notation for the F scale in a standard scale pattern. The key signature has one flat (Bb). The notes are: F1, F2, F3, F4 (Bb), F5, F6, F7, F8. A blue circle highlights the Bb note. A slur covers the notes from F5 to F8.

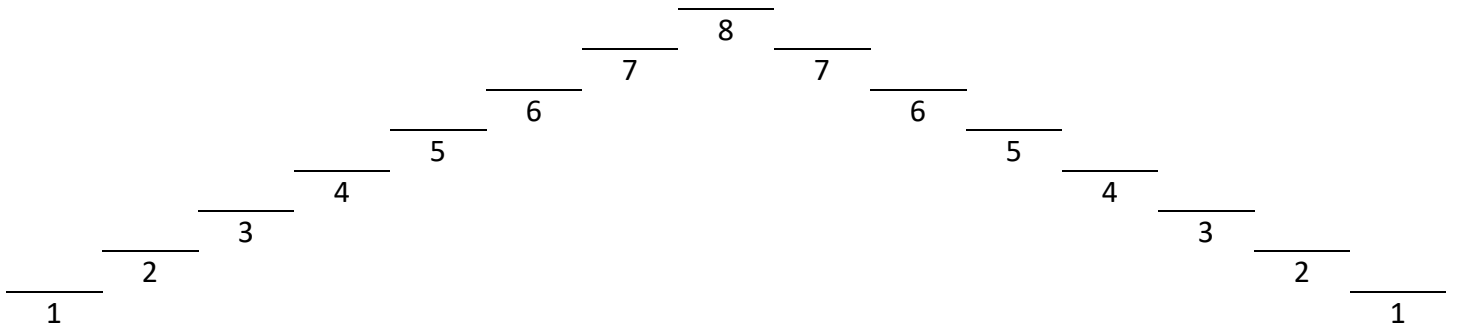
Inverse Scale Pattern

4. Musical notation for the F scale in an inverse scale pattern. The key signature has one flat (Bb). The notes are: F8, F7, F6, F5, F4 (Bb), F3, F2, F1. A slur covers the notes from F8 to F4.

Eighth Note Scale Pattern

5. Musical notation for the F scale in an eighth note scale pattern. The key signature has one flat (Bb). The notes are: F1, F2, F3, F4 (Bb), F5, F6, F7, F8. A slur covers the notes from F5 to F8.

F Scale



Whole Note Scale

1. Musical notation for the F scale using whole notes. The scale is written in treble clef with a key signature of one flat (Bb) and a 4/4 time signature. The notes are: F2, G2, A2, Bb2, B2, C3, D3, E3, F3, G3, A3, Bb3, B3, C4, D4, E4, F4. Fingerings 1 through 8 are indicated above the notes.

Half Note Scale

2. Musical notation for the F scale using half notes. The scale is written in treble clef with a key signature of one flat (Bb) and a 4/4 time signature. The notes are: F2, G2, A2, Bb2, B2, C3, D3, E3, F3, G3, A3, Bb3, B3, C4, D4, E4, F4.

Standard Scale Pattern

3. Musical notation for the F scale using a standard scale pattern. The scale is written in treble clef with a key signature of one flat (Bb) and a 4/4 time signature. The notes are: F2, G2, A2, Bb2, B2, C3, D3, E3, F3, G3, A3, Bb3, B3, C4, D4, E4, F4. A blue circle highlights the Bb2 note, and a curved line connects the notes from C3 to F4.

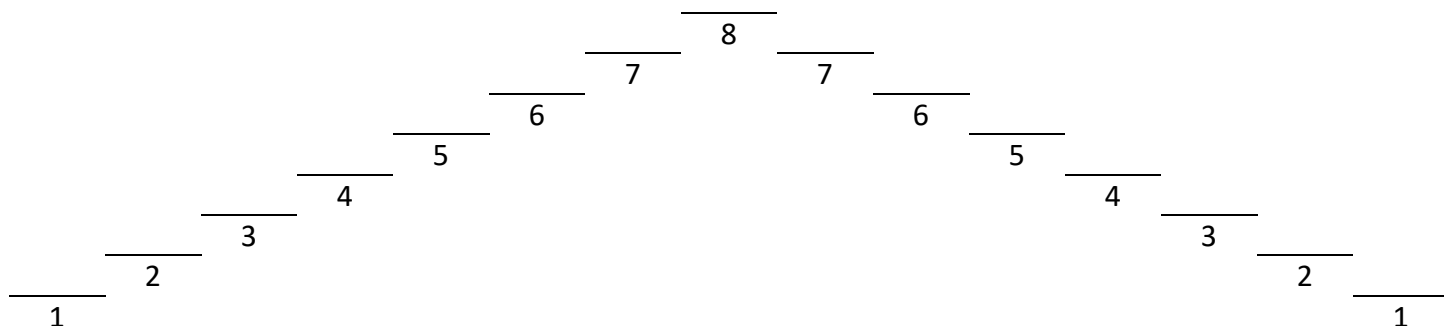
Inverse Scale Pattern

4. Musical notation for the F scale using an inverse scale pattern. The scale is written in treble clef with a key signature of one flat (Bb) and a 4/4 time signature. The notes are: F2, G2, A2, Bb2, B2, C3, D3, E3, F3, G3, A3, Bb3, B3, C4, D4, E4, F4.

Eighth Note Scale Pattern

5. Musical notation for the F scale using an eighth note scale pattern. The scale is written in treble clef with a key signature of one flat (Bb) and a 4/4 time signature. The notes are: F2, G2, A2, Bb2, B2, C3, D3, E3, F3, G3, A3, Bb3, B3, C4, D4, E4, F4. A curved line connects the notes from C3 to F4.

F Scale



Whole Note Scale

1. Musical notation for the F scale in whole notes. The key signature has one flat (Bb). The notes are: F (C4), G (C4), A (C4), Bb (C4), B (C4), C (C4), D (C4), Eb (C4), E (C4), F (C4), G (C4), A (C4), Bb (C4), B (C4), C (C4). The notes are numbered 1 through 8 above the staff.

Half Note Scale

2. Musical notation for the F scale in half notes. The key signature has one flat (Bb). The notes are: F (C4), G (C4), A (C4), Bb (C4), B (C4), C (C4), D (C4), Eb (C4), E (C4), F (C4), G (C4), A (C4), Bb (C4), B (C4), C (C4).

Standard Scale Pattern

3. Musical notation for the F scale in a standard scale pattern. The key signature has one flat (Bb). The notes are: F (C4), G (C4), A (C4), Bb (C4), B (C4), C (C4), D (C4), Eb (C4), E (C4), F (C4), G (C4), A (C4), Bb (C4), B (C4), C (C4). A blue circle highlights the first note (F). A slur covers the notes from Eb to C.

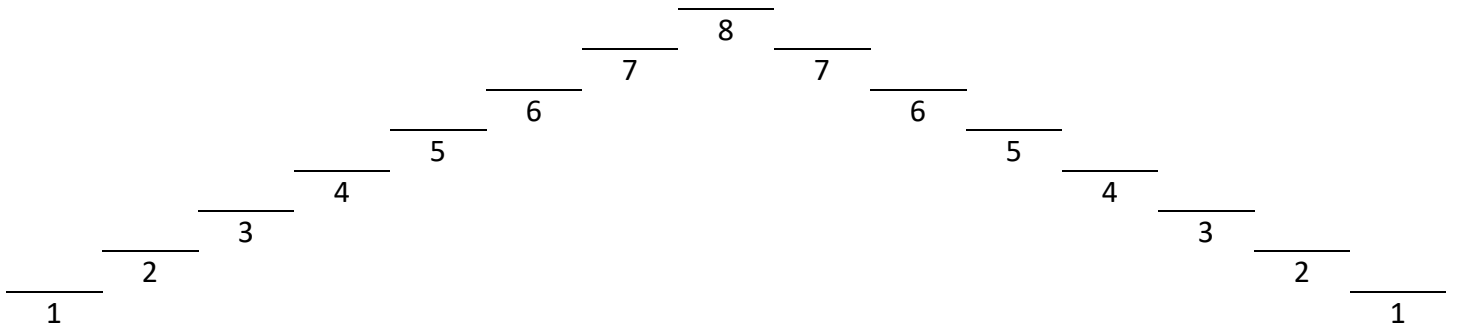
Inverse Scale Pattern

4. Musical notation for the F scale in an inverse scale pattern. The key signature has one flat (Bb). The notes are: F (C4), G (C4), A (C4), Bb (C4), B (C4), C (C4), D (C4), Eb (C4), E (C4), F (C4), G (C4), A (C4), Bb (C4), B (C4), C (C4).

Eighth Note Scale Pattern

5. Musical notation for the F scale in an eighth note scale pattern. The key signature has one flat (Bb). The notes are: F (C4), G (C4), A (C4), Bb (C4), B (C4), C (C4), D (C4), Eb (C4), E (C4), F (C4), G (C4), A (C4), Bb (C4), B (C4), C (C4). A slur covers the notes from Eb to C.

F Scale



1. **Whole Note Scale**

Musical notation for the whole note scale of the F major scale. The key signature has one flat (Bb). The notes are: F (1), G (2), A (3), Bb (4), B (5), C (6), D (7), E (8). Each note is a whole note.

2. **Half Note Scale**

Musical notation for the half note scale of the F major scale. The key signature has one flat (Bb). The notes are: F, G, A, Bb, B, C, D, E, F, G, A, Bb, B, C, D, E, F. Each note is a half note.

3. **Standard Scale Pattern**

Musical notation for the standard scale pattern of the F major scale. The key signature has one flat (Bb). The notes are: F, G, A, Bb, B, C, D, E, F, G, A, Bb, B, C, D, E, F. A slur covers the notes from the second E to the final F.

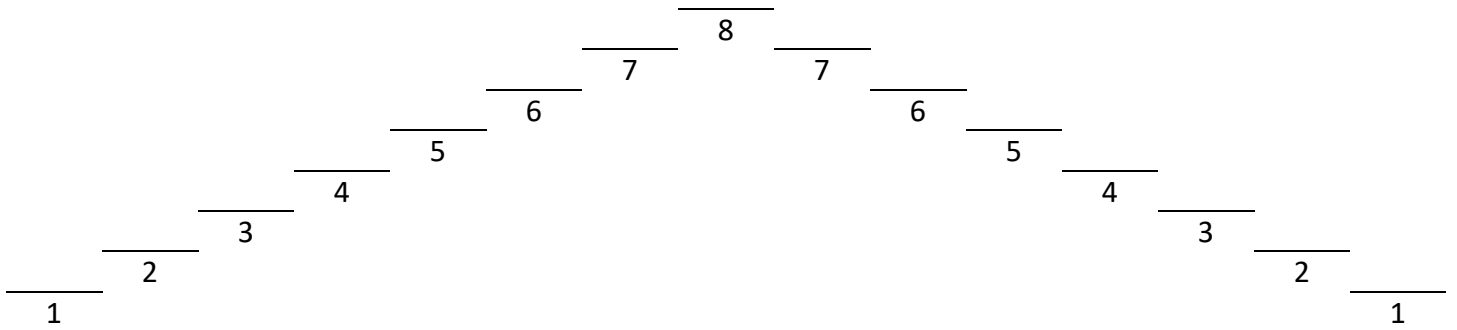
4. **Inverse Scale Pattern**

Musical notation for the inverse scale pattern of the F major scale. The key signature has one flat (Bb). The notes are: F, G, A, Bb, B, C, D, E, F, G, A, Bb, B, C, D, E, F. A slur covers the notes from the second E to the final F.

5. **Eighth Note Scale Pattern**

Musical notation for the eighth note scale pattern of the F major scale. The key signature has one flat (Bb). The notes are: F, G, A, Bb, B, C, D, E, F, G, A, Bb, B, C, D, E, F. A slur covers the notes from the second E to the final F.

F# Scale



Whole Note Scale

1. *Whole Note Scale*

1 2 3 4 5 6 7 8

Musical notation for the whole note scale of F# in bass clef, 4/4 time. The notes are: F# (first line), G# (first space), A# (second line), B (second space), C# (third line), D# (third space), E# (fourth line), and F# (fourth space). Each note is a whole note.

Half Note Scale

2. *Half Note Scale*

Musical notation for the half note scale of F# in bass clef, 4/4 time. The notes are: F# (first line), G# (first space), A# (second line), B (second space), C# (third line), D# (third space), E# (fourth line), and F# (fourth space). Each note is a half note.

Standard Scale Pattern

3. *Standard Scale Pattern*

Musical notation for the standard scale pattern of F# in bass clef, 4/4 time. The notes are: F# (first line), G# (first space), A# (second line), B (second space), C# (third line), D# (third space), E# (fourth line), and F# (fourth space). The first four notes are circled in blue.

Inverse Scale Pattern

4. *Inverse Scale Pattern*

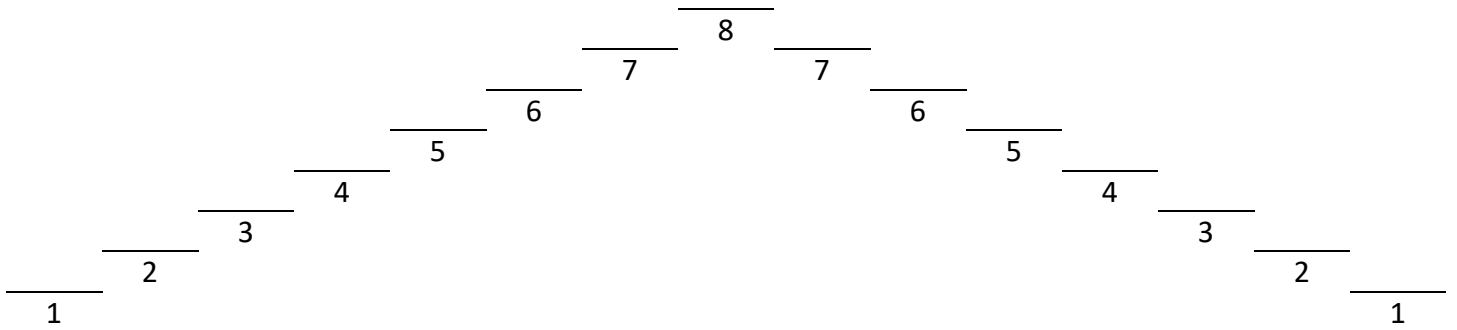
Musical notation for the inverse scale pattern of F# in bass clef, 4/4 time. The notes are: F# (first line), G# (first space), A# (second line), B (second space), C# (third line), D# (third space), E# (fourth line), and F# (fourth space). The first four notes are circled in blue.

Eighth Note Scale Pattern

5. *Eighth Note Scale Pattern*

Musical notation for the eighth note scale pattern of F# in bass clef, 4/4 time. The notes are: F# (first line), G# (first space), A# (second line), B (second space), C# (third line), D# (third space), E# (fourth line), and F# (fourth space). The notes are beamed together in groups of four.

F# Scale



Whole Note Scale

1. Musical notation for the whole note scale of F# in bass clef, 4/4 time. The notes are F#4, G#4, A4, B4, C#5, D5, E5, and F#5, each held for a whole note. Fingerings 1 through 8 are indicated above the notes.

Half Note Scale

2. Musical notation for the half note scale of F# in bass clef, 4/4 time. The notes are F#4, G#4, A4, B4, C#5, D5, E5, and F#5, each held for a half note.

Standard Scale Pattern

3. Musical notation for the standard scale pattern of F# in bass clef, 4/4 time. The notes are F#4, G#4, A4, B4, C#5, D5, E5, and F#5, each held for a quarter note. A slur covers the notes from G#4 to F#5.

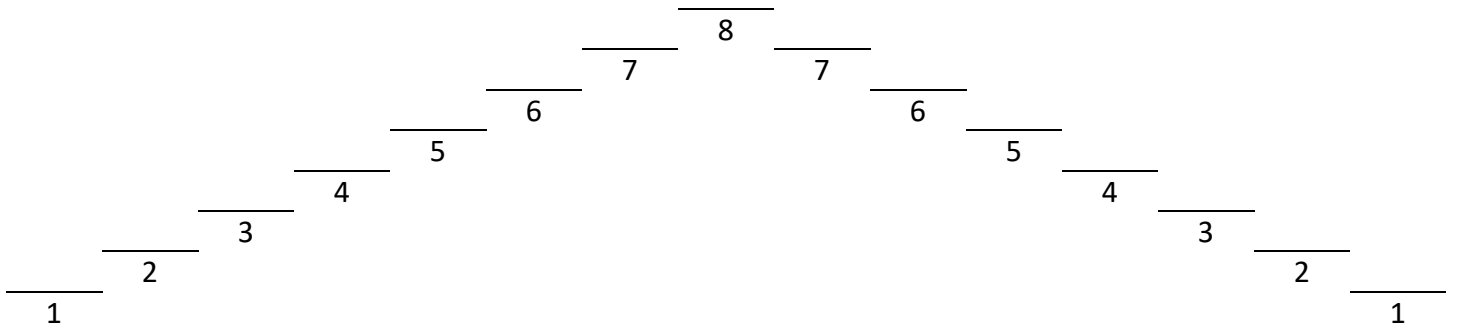
Inverse Scale Pattern

4. Musical notation for the inverse scale pattern of F# in bass clef, 4/4 time. The notes are F#4, G#4, A4, B4, C#5, D5, E5, and F#5, each held for a quarter note. A slur covers the notes from F#4 to G#4.

Eighth Note Scale Pattern

5. Musical notation for the eighth note scale pattern of F# in bass clef, 4/4 time. The notes are F#4, G#4, A4, B4, C#5, D5, E5, and F#5, each held for an eighth note. A slur covers the notes from G#4 to F#5.

F# Scale



Whole Note Scale

1. Musical notation for the F# scale in whole notes. The key signature has three sharps (F#, C#, G#). The scale is written on a bass clef staff in 4/4 time. The notes are: F# (finger 1), G# (finger 2), A# (finger 3), B (finger 4), C# (finger 5), D# (finger 6), E# (finger 7), and F# (finger 8).

Half Note Scale

2. Musical notation for the F# scale in half notes. The key signature has three sharps (F#, C#, G#). The scale is written on a bass clef staff in 4/4 time. The notes are: F# (finger 1), G# (finger 2), A# (finger 3), B (finger 4), C# (finger 5), D# (finger 6), E# (finger 7), and F# (finger 8).

Standard Scale Pattern

3. Musical notation for the F# scale in a standard scale pattern. The key signature has three sharps (F#, C#, G#). The scale is written on a bass clef staff in 4/4 time. The notes are: F# (finger 1), G# (finger 2), A# (finger 3), B (finger 4), C# (finger 5), D# (finger 6), E# (finger 7), and F# (finger 8). A slur covers the notes from G# to F#.

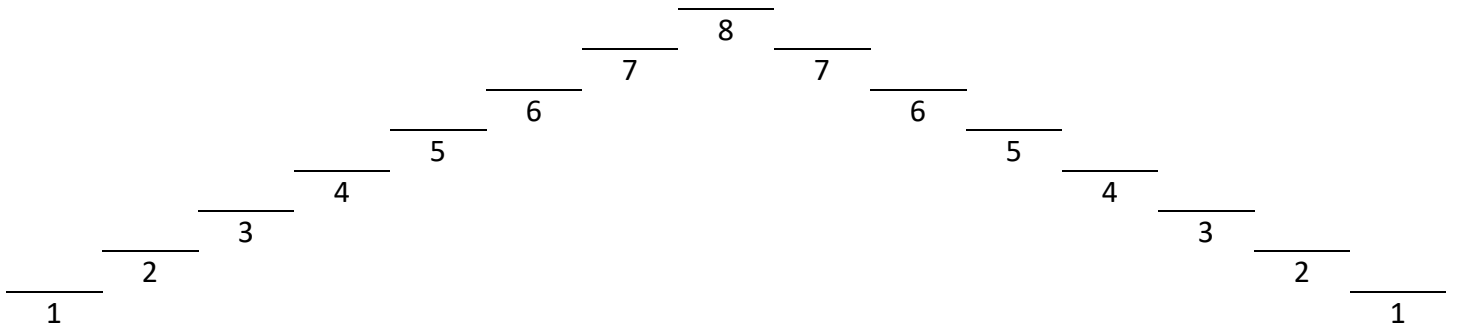
Inverse Scale Pattern

4. Musical notation for the F# scale in an inverse scale pattern. The key signature has three sharps (F#, C#, G#). The scale is written on a bass clef staff in 4/4 time. The notes are: F# (finger 1), G# (finger 2), A# (finger 3), B (finger 4), C# (finger 5), D# (finger 6), E# (finger 7), and F# (finger 8). A slur covers the notes from G# to F#.

Eighth Note Scale Pattern

5. Musical notation for the F# scale in an eighth note scale pattern. The key signature has three sharps (F#, C#, G#). The scale is written on a bass clef staff in 4/4 time. The notes are: F# (finger 1), G# (finger 2), A# (finger 3), B (finger 4), C# (finger 5), D# (finger 6), E# (finger 7), and F# (finger 8). A slur covers the notes from G# to F#.

F# Scale



Whole Note Scale

1.

A musical staff in treble clef with a 4/4 time signature. It contains eight whole notes: F#4, G#4, A4, B4, C#5, D5, E5, and F#5. Fingerings 1 through 8 are written above each note.

Half Note Scale

2.

A musical staff in treble clef with a 4/4 time signature. It contains sixteen half notes: F#4, G#4, A4, B4, C#5, D5, E5, F#5, G#5, A5, B5, C#6, D6, E6, F#6, and G#6.

Standard Scale Pattern

3.

A musical staff in treble clef with a 4/4 time signature. It shows the standard scale pattern for F# in a 4-measure phrase: F#4, G#4, A4, B4, C#5, D5, E5, F#5. The first four notes are circled in blue.

Inverse Scale Pattern

4.

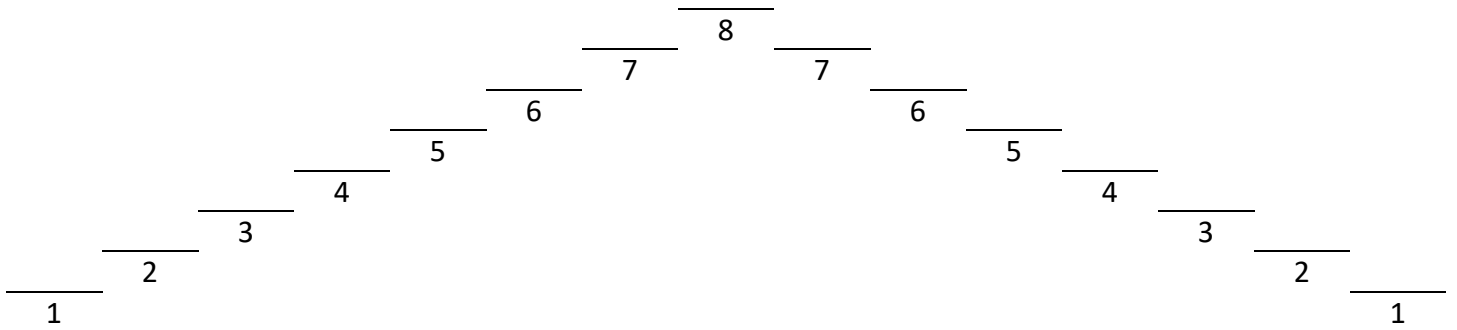
A musical staff in treble clef with a 4/4 time signature. It shows the inverse scale pattern for F# in a 4-measure phrase: F#5, E5, D5, C#5, B4, A4, G#4, F#4.

Eighth Note Scale Pattern

5.

A musical staff in treble clef with a 4/4 time signature. It shows the eighth note scale pattern for F# in a 4-measure phrase: F#4, G#4, A4, B4, C#5, D5, E5, F#5. The notes are beamed in groups of four.

F# Scale



Whole Note Scale

1. Musical notation for the F# whole note scale in 4/4 time. The notes are: F# (quarter), G# (quarter), A# (quarter), B (quarter), C# (quarter), D# (quarter), E# (quarter), and F# (quarter). Fingering numbers 1 through 8 are placed above each note.

Half Note Scale

2. Musical notation for the F# half note scale in 4/4 time. The notes are: F# (half), G# (half), A# (half), B (half), C# (half), D# (half), E# (half), and F# (half).

Standard Scale Pattern

3. Musical notation for the F# standard scale pattern in 4/4 time. The notes are: F# (quarter), G# (quarter), A# (quarter), B (quarter), C# (quarter), D# (quarter), E# (quarter), F# (quarter), G# (quarter), A# (quarter), B (quarter), C# (quarter), D# (quarter), E# (quarter), and F# (quarter). A blue circle highlights the first four notes (F#, G#, A#, B). A slur covers the last four notes (C#, D#, E#, F#).

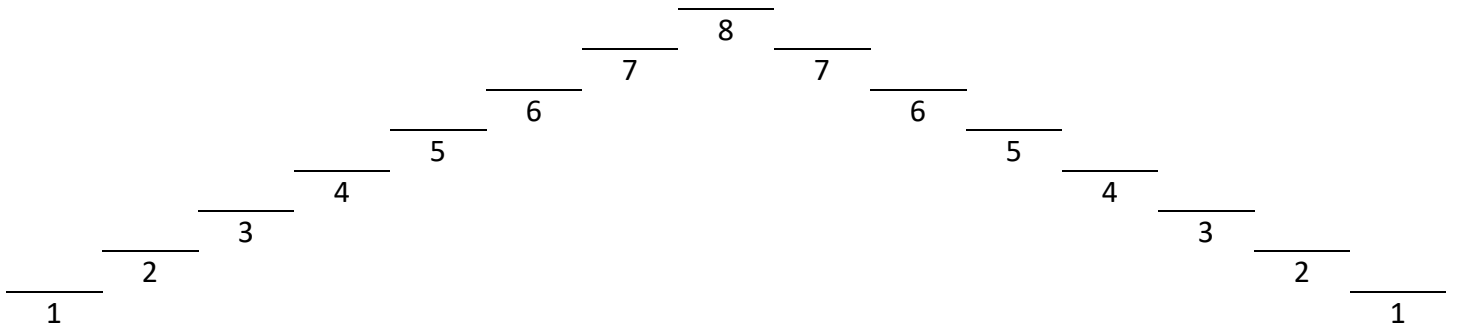
Inverse Scale Pattern

4. Musical notation for the F# inverse scale pattern in 4/4 time. The notes are: F# (quarter), G# (quarter), A# (quarter), B (quarter), C# (quarter), D# (quarter), E# (quarter), F# (quarter), G# (quarter), A# (quarter), B (quarter), C# (quarter), D# (quarter), E# (quarter), and F# (quarter).

Eighth Note Scale Pattern

5. Musical notation for the F# eighth note scale pattern in 4/4 time. The notes are: F# (quarter), G# (quarter), A# (quarter), B (quarter), C# (quarter), D# (quarter), E# (quarter), F# (quarter), G# (quarter), A# (quarter), B (quarter), C# (quarter), D# (quarter), E# (quarter), and F# (quarter). A slur covers the last four notes (C#, D#, E#, F#).

F# Scale



Whole Note Scale

1.
Musical notation for the whole note scale of F#. The key signature has one sharp (F#) and the time signature is 4/4. The notes are: F# (1), G# (2), A (3), B (4), C# (5), D# (6), E (7), F# (8).

Half Note Scale

2.
Musical notation for the half note scale of F#. The key signature has one sharp (F#) and the time signature is 4/4. The notes are: F# (1), G# (2), A (3), B (4), C# (5), D# (6), E (7), F# (8).

Standard Scale Pattern

3.
Musical notation for the standard scale pattern of F#. The key signature has one sharp (F#) and the time signature is 4/4. The notes are: F# (1), G# (2), A (3), B (4), C# (5), D# (6), E (7), F# (8).

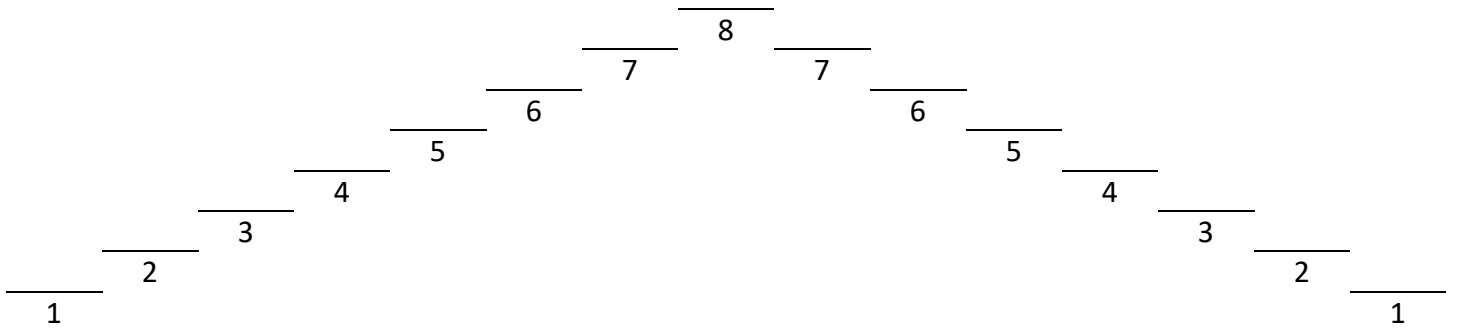
Inverse Scale Pattern

4.
Musical notation for the inverse scale pattern of F#. The key signature has one sharp (F#) and the time signature is 4/4. The notes are: F# (1), G# (2), A (3), B (4), C# (5), D# (6), E (7), F# (8).

Eighth Note Scale Pattern

5.
Musical notation for the eighth note scale pattern of F#. The key signature has one sharp (F#) and the time signature is 4/4. The notes are: F# (1), G# (2), A (3), B (4), C# (5), D# (6), E (7), F# (8).

G Scale



Whole Note Scale

1. *Whole Note Scale*

Musical notation for the whole note G scale in bass clef, 4/4 time. The notes are G, A, B, C, D, E, F#, G, each held for a whole note. Fingerings 1 through 8 are indicated above the notes.

Half Note Scale

2. *Half Note Scale*

Musical notation for the half note G scale in bass clef, 4/4 time. The notes are G, A, B, C, D, E, F#, G, each held for a half note.

Standard Scale Pattern

3. *Standard Scale Pattern*

Musical notation for the standard G scale pattern in bass clef, 4/4 time. The notes are G, A, B, C, D, E, F#, G, each held for a quarter note. A circled G with a sharp sign is shown at the beginning. A slur covers the descending half of the scale.

Inverse Scale Pattern

4. *Inverse Scale Pattern*

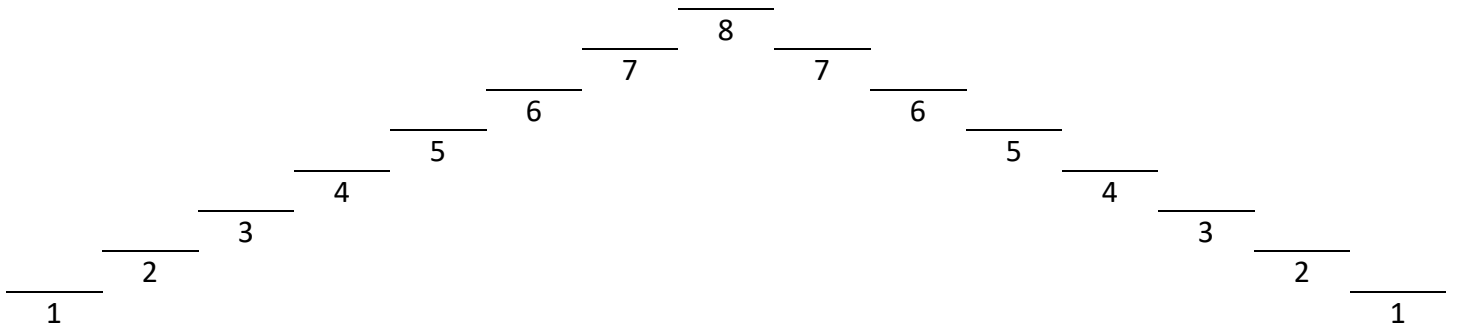
Musical notation for the inverse G scale pattern in bass clef, 4/4 time. The notes are G, A, B, C, D, E, F#, G, each held for a quarter note. A slur covers the descending half of the scale.

Eighth Note Scale Pattern

5. *Eighth Note Scale Pattern*

Musical notation for the eighth note G scale pattern in bass clef, 4/4 time. The notes are G, A, B, C, D, E, F#, G, each held for an eighth note. A slur covers the descending half of the scale.

G Scale



Whole Note Scale

1.

Half Note Scale

2.

Standard Scale Pattern

3.

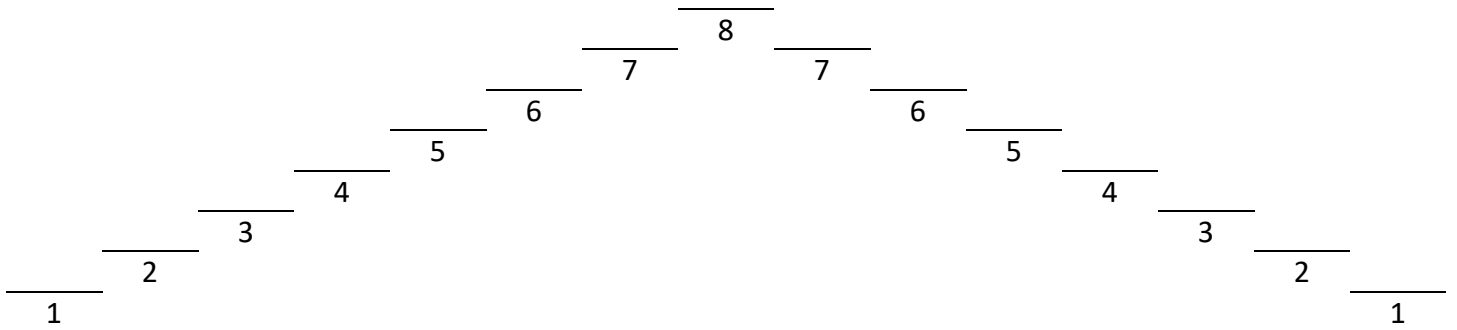
Inverse Scale Pattern

4.

Eighth Note Scale Pattern

5.

G Scale



Whole Note Scale

1.

Half Note Scale

2.

Standard Scale Pattern

3.

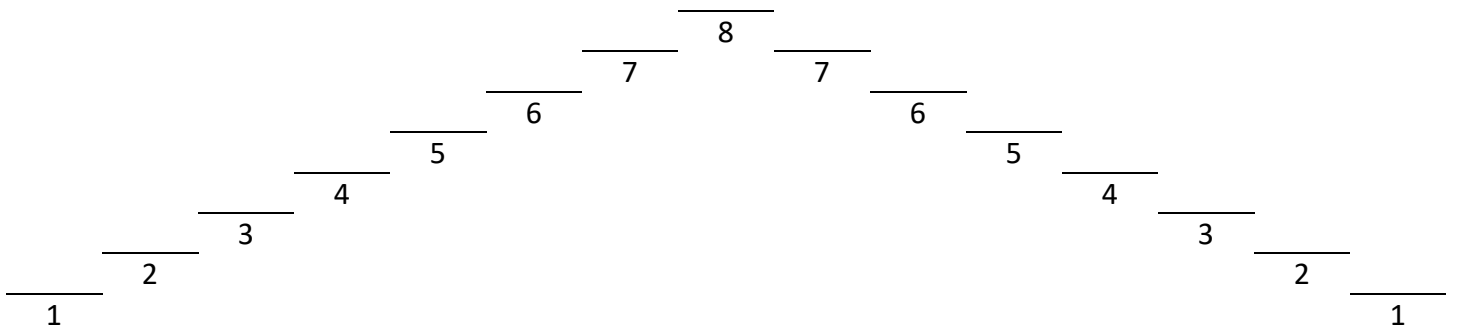
Inverse Scale Pattern

4.

Eighth Note Scale Pattern

5.

G Scale



Whole Note Scale

1. Musical notation for the whole note G scale in G major. The key signature has one sharp (F#). The scale is written in 4/4 time, with each note held for a whole note. The notes are G, A, B, C, D, E, F#, G. Fingerings 1 through 8 are indicated above the notes.

Half Note Scale

2. Musical notation for the half note G scale in G major. The key signature has one sharp (F#). The scale is written in 4/4 time, with each note held for a half note. The notes are G, A, B, C, D, E, F#, G. Fingerings 1 through 8 are indicated above the notes.

Standard Scale Pattern

3. Musical notation for the standard scale pattern of the G scale in G major. The key signature has one sharp (F#). The scale is written in 4/4 time, with each note held for a quarter note. The notes are G, A, B, C, D, E, F#, G. A blue circle highlights the F# note. A curved line connects the G and F# notes.

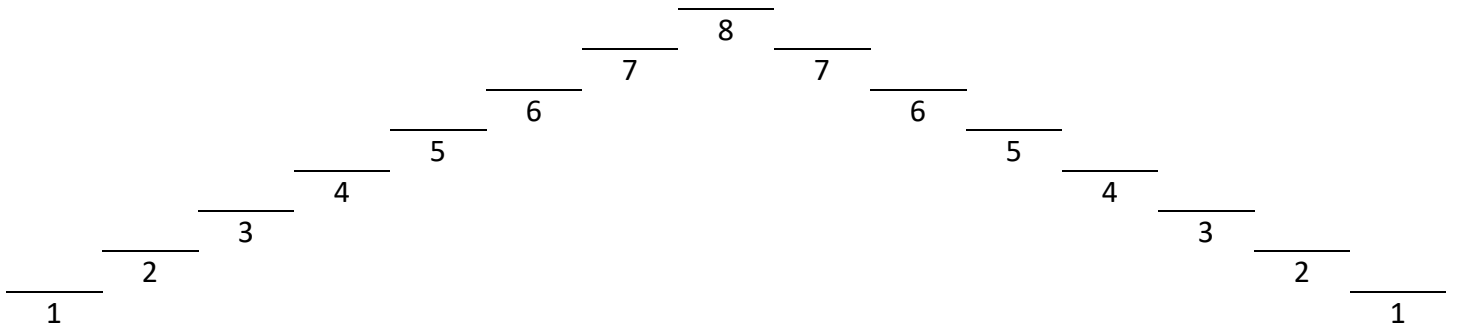
Inverse Scale Pattern

4. Musical notation for the inverse scale pattern of the G scale in G major. The key signature has one sharp (F#). The scale is written in 4/4 time, with each note held for a quarter note. The notes are G, F#, E, D, C, B, A, G. A curved line connects the G and F# notes.

Eighth Note Scale Pattern

5. Musical notation for the eighth note scale pattern of the G scale in G major. The key signature has one sharp (F#). The scale is written in 4/4 time, with each note held for an eighth note. The notes are G, A, B, C, D, E, F#, G. A curved line connects the G and F# notes.

G Scale



Whole Note Scale

1.

Half Note Scale

2.

Standard Scale Pattern

3.

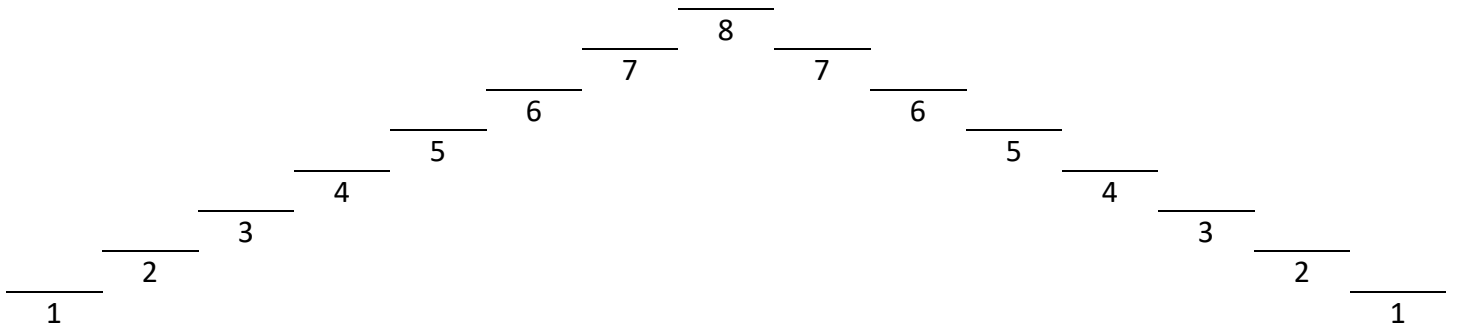
Inverse Scale Pattern

4.

Eighth Note Scale Pattern

5.

G Scale



1. **Whole Note Scale**

Musical notation for the whole note G scale in treble clef, 4/4 time. The notes are G, A, B, C, D, E, F#, G, each held for a whole note. Fingerings 1 through 8 are indicated above the notes.

2. **Half Note Scale**

Musical notation for the half note G scale in treble clef, 4/4 time. The notes are G, A, B, C, D, E, F#, G, each held for a half note.

3. **Standard Scale Pattern**

Musical notation for the standard eighth note G scale pattern in treble clef, 4/4 time. The notes are G, A, B, C, D, E, F#, G, each held for an eighth note. A slur covers the entire scale.

4. **Inverse Scale Pattern**

Musical notation for the inverse eighth note G scale pattern in treble clef, 4/4 time. The notes are G, F#, E, D, C, B, A, G, each held for an eighth note.

5. **Eighth Note Scale Pattern**

Musical notation for the eighth note G scale pattern in treble clef, 4/4 time. The notes are G, A, B, C, D, E, F#, G, each held for an eighth note. A slur covers the entire scale.